



Microsoft 365
COMMUNITY CONFERENCE

Demystifying Multiagent (Child / Connected) and Component Collection

Uhova

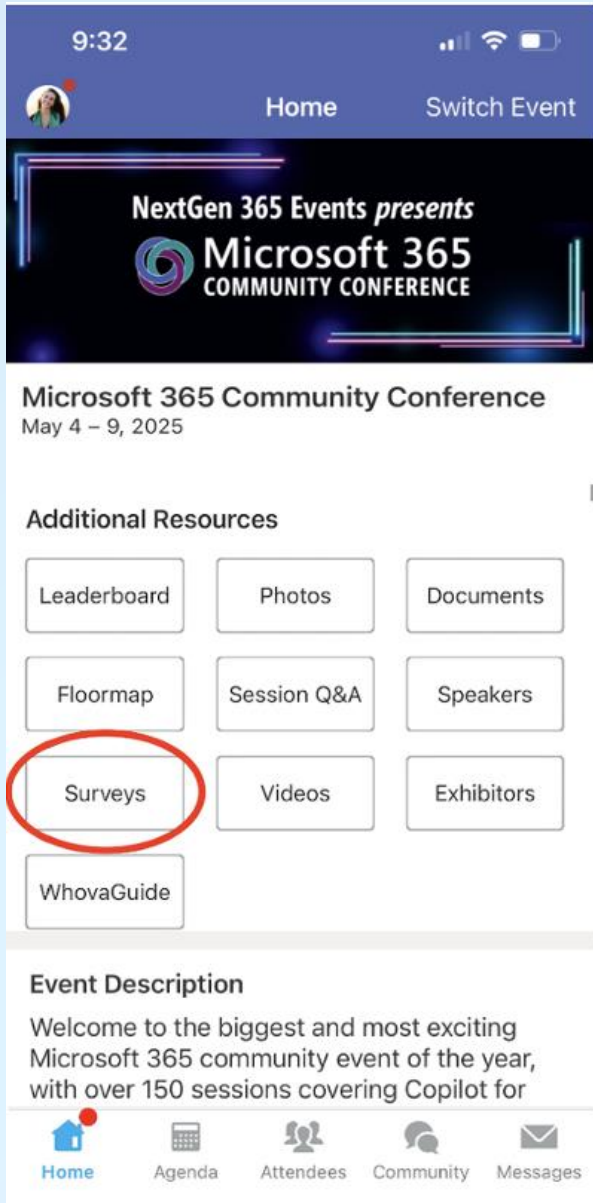
The official event app for the
Microsoft 365 Community Conference

Event invitation code: Orlando2026



Join the event app to access:

- ➔ Event announcements
- ➔ Personalized agenda, session details
- ➔ Speaker & attendee profiles
- ➔ Networking, meet-ups, messages
- ➔ Event documents



Session feedback surveys

We want to hear from YOU!

Share your feedback to make next years conference even better!

Here's how –

- Simply go to the Whova App on your smartphone.
- Scroll down on the M365 Community Conference Homepage to 'Additional Resources' to click "Surveys".
- Click Session Feedback.
- Scroll down to find this session title.
- Complete the session feedback survey.
- Finally, click 'Submit'.

It's just that easy!



Dewain Robinson

Principal Solution Architect – CAT
Copilot Studio Dude



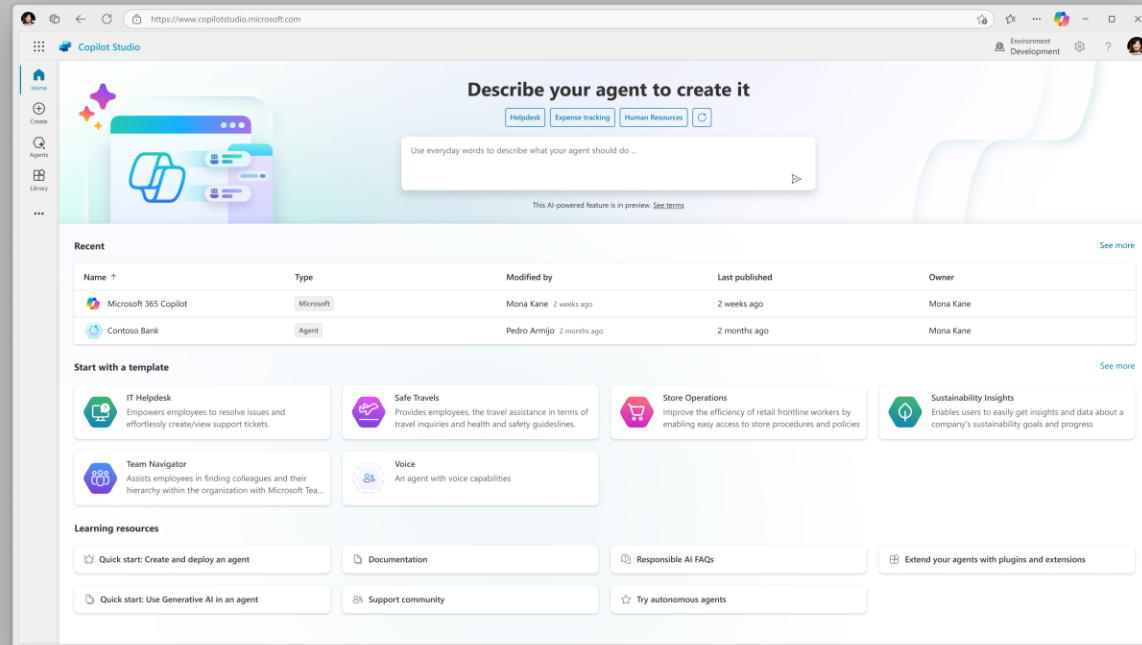
Bobby Chang

Agent Development Engineer -
CAT



Copilot Studio

Copilot Studio is a low code tool for **building agents** and **extending Microsoft 365 Copilot**.



✔ Meet your users where they already are

✔ Access everything in one place

✔ Automate your workflows

✔ Integrate with your external apps

✔ Connect to your data in Microsoft 365

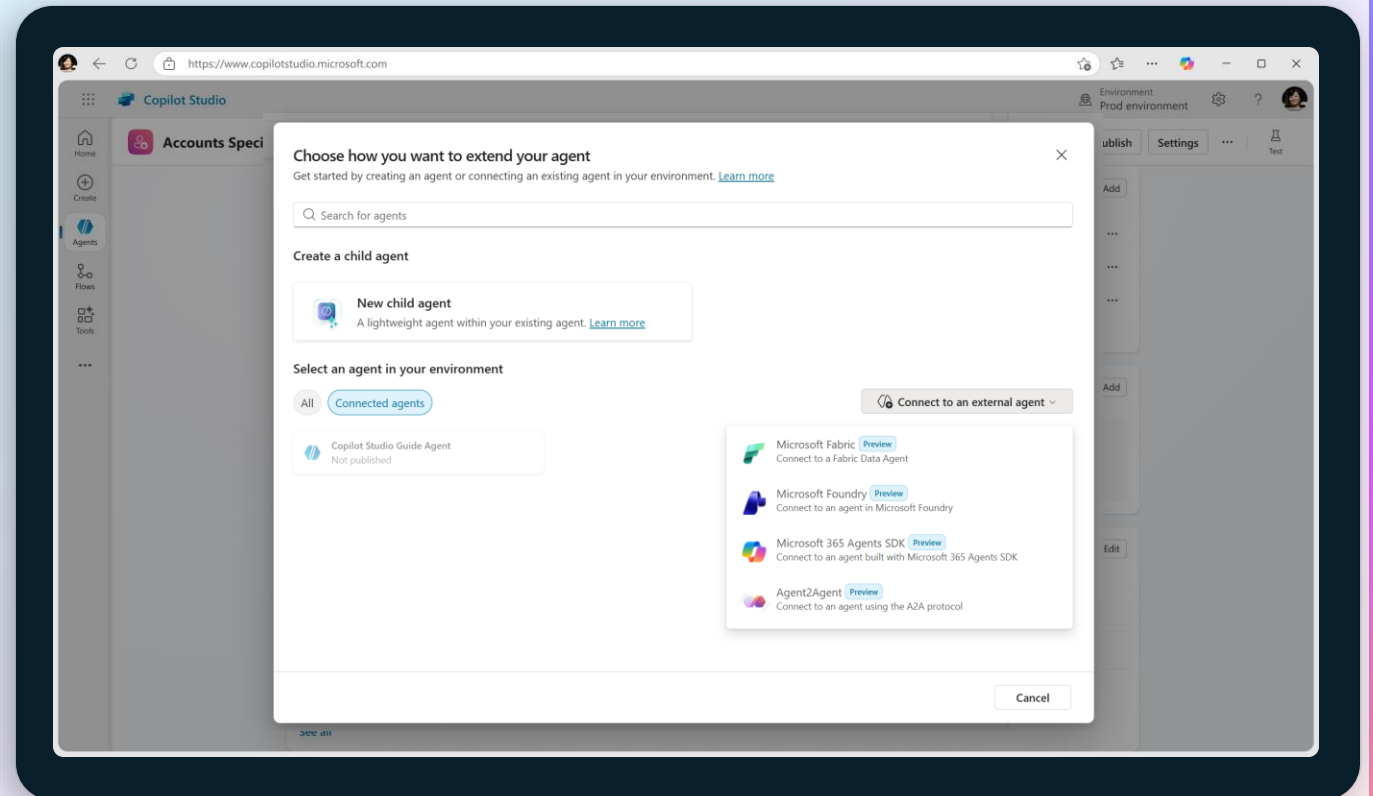
Multi-agent orchestration in Copilot Studio

Build multi-agent scenarios, connecting to agents from other services, in Copilot Studio

Effective end-to-end transformation: Enable agents to talk to each other in Copilot Studio, exchanging data, collaborating on tasks, and distributing work

Cross-platform orchestration: Connect your agents with other agents in your tenant, whether they were built using Copilot Studio, Microsoft Foundry Agents, Microsoft 365 Agents SDK or Fabric

Agent specialization: An agent can call on connected agents where specialized knowledge or actions are required and complete tasks in minutes.





Copilot Studio agent

Knowledge

Public websites

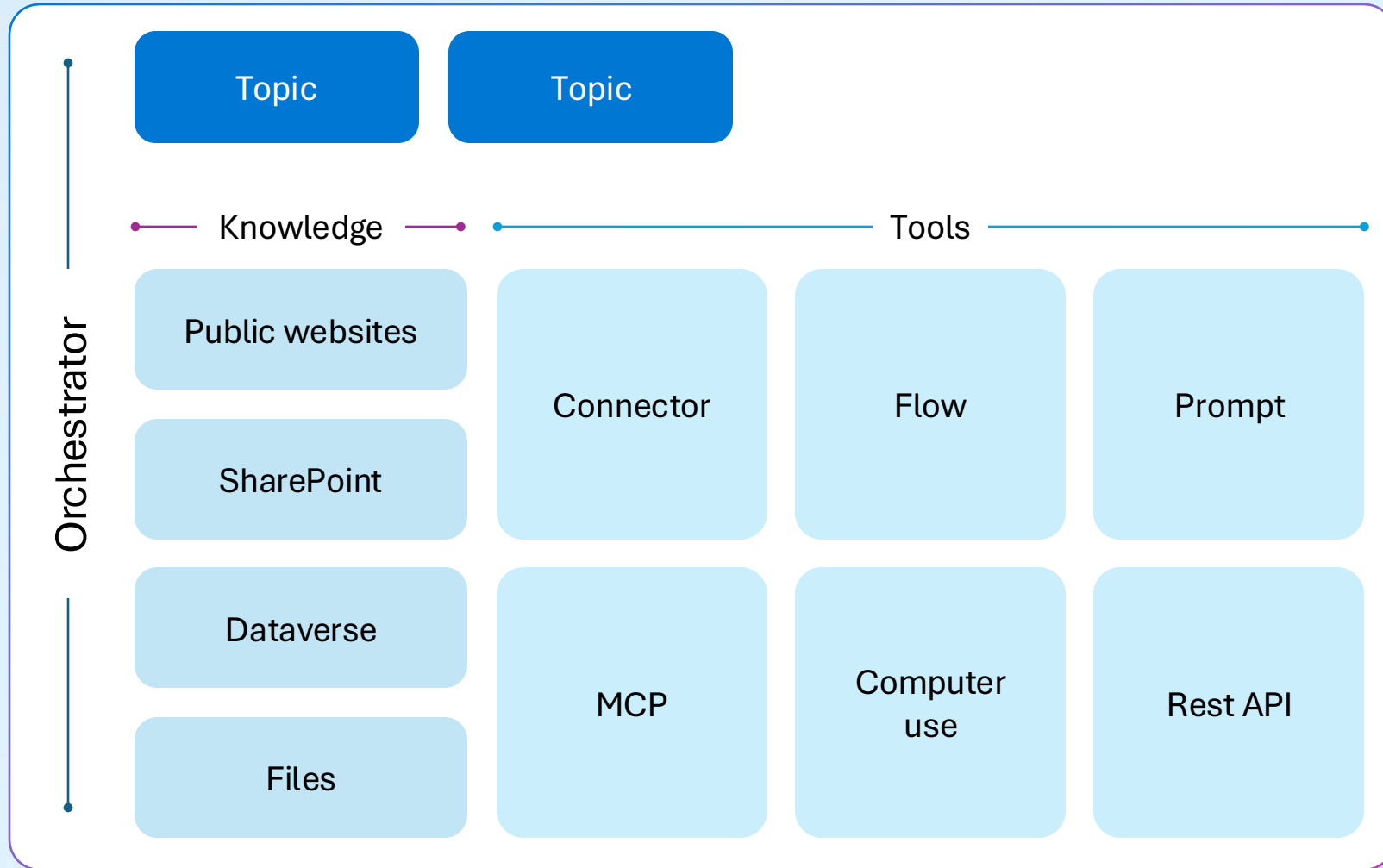
SharePoint

Dataverse

Files

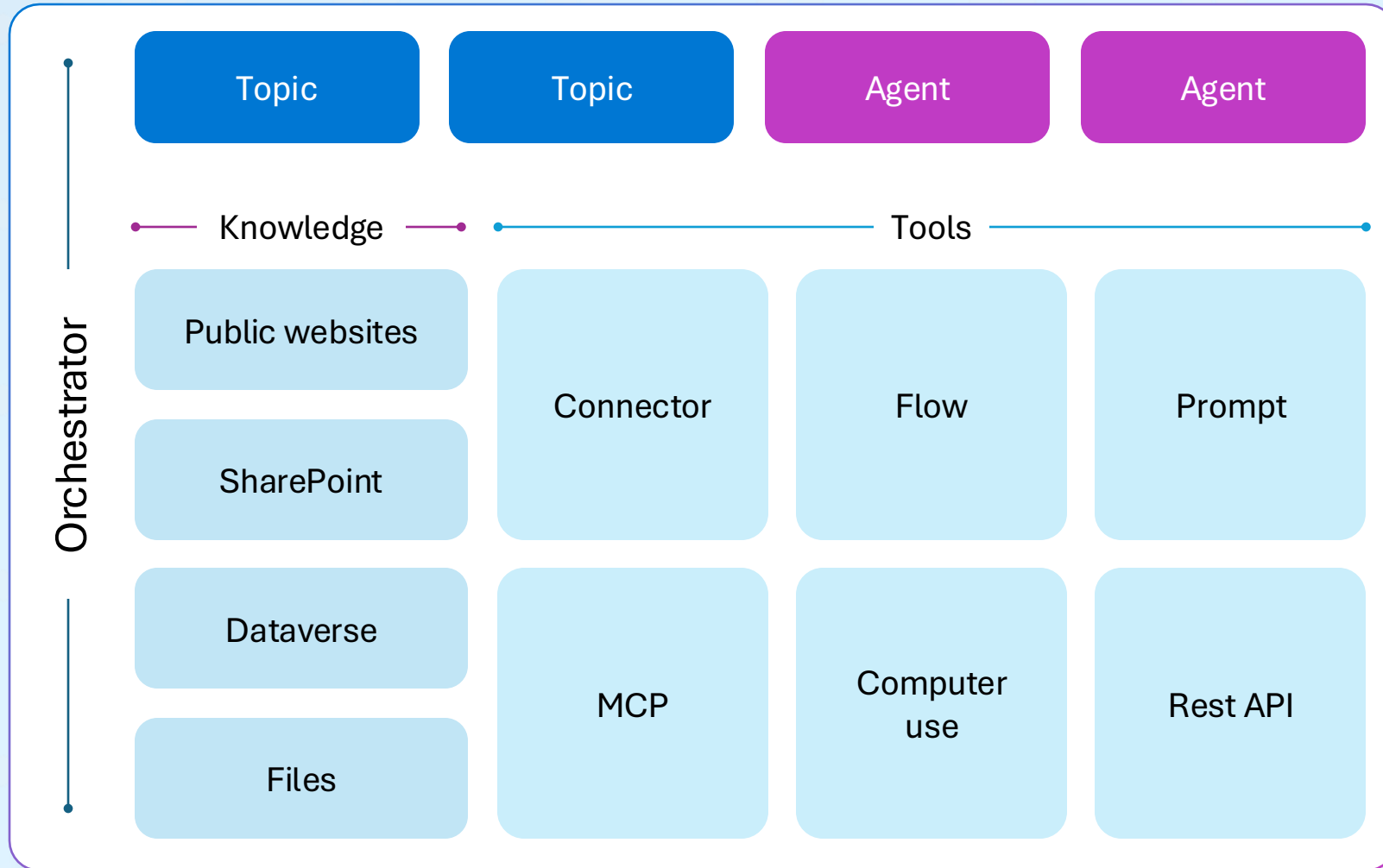


Copilot Studio agent



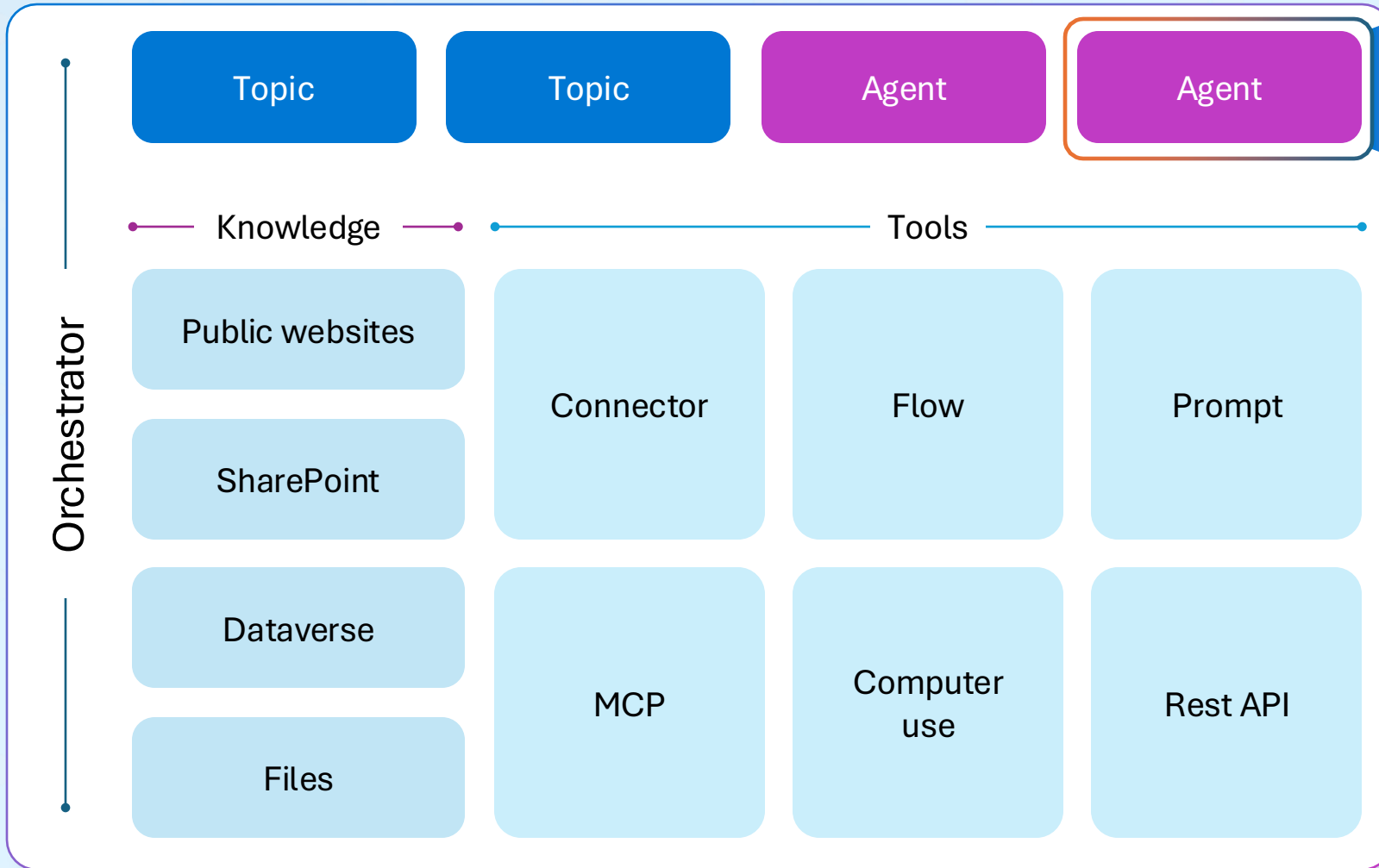


Copilot Studio agent





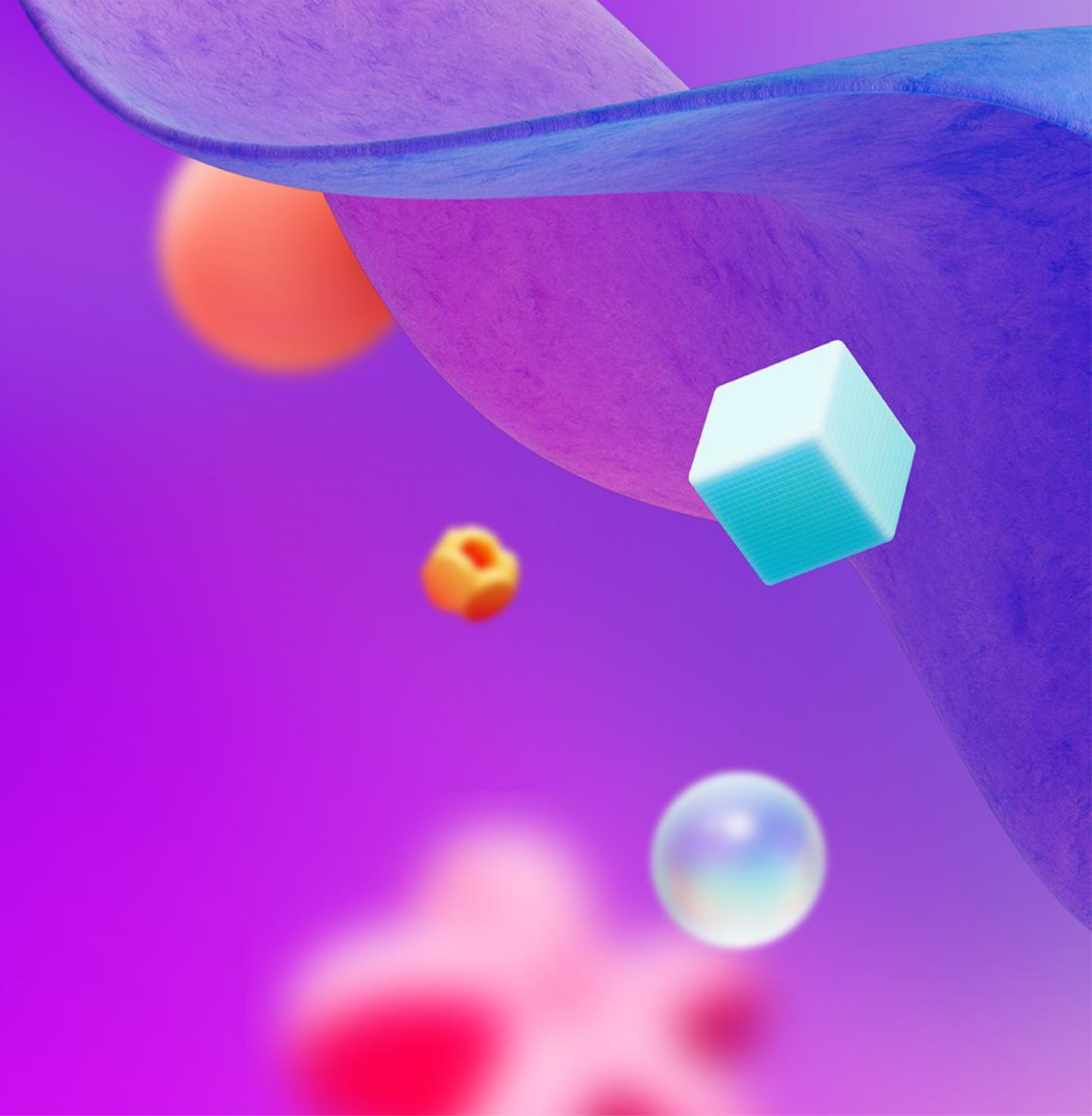
Copilot Studio agent



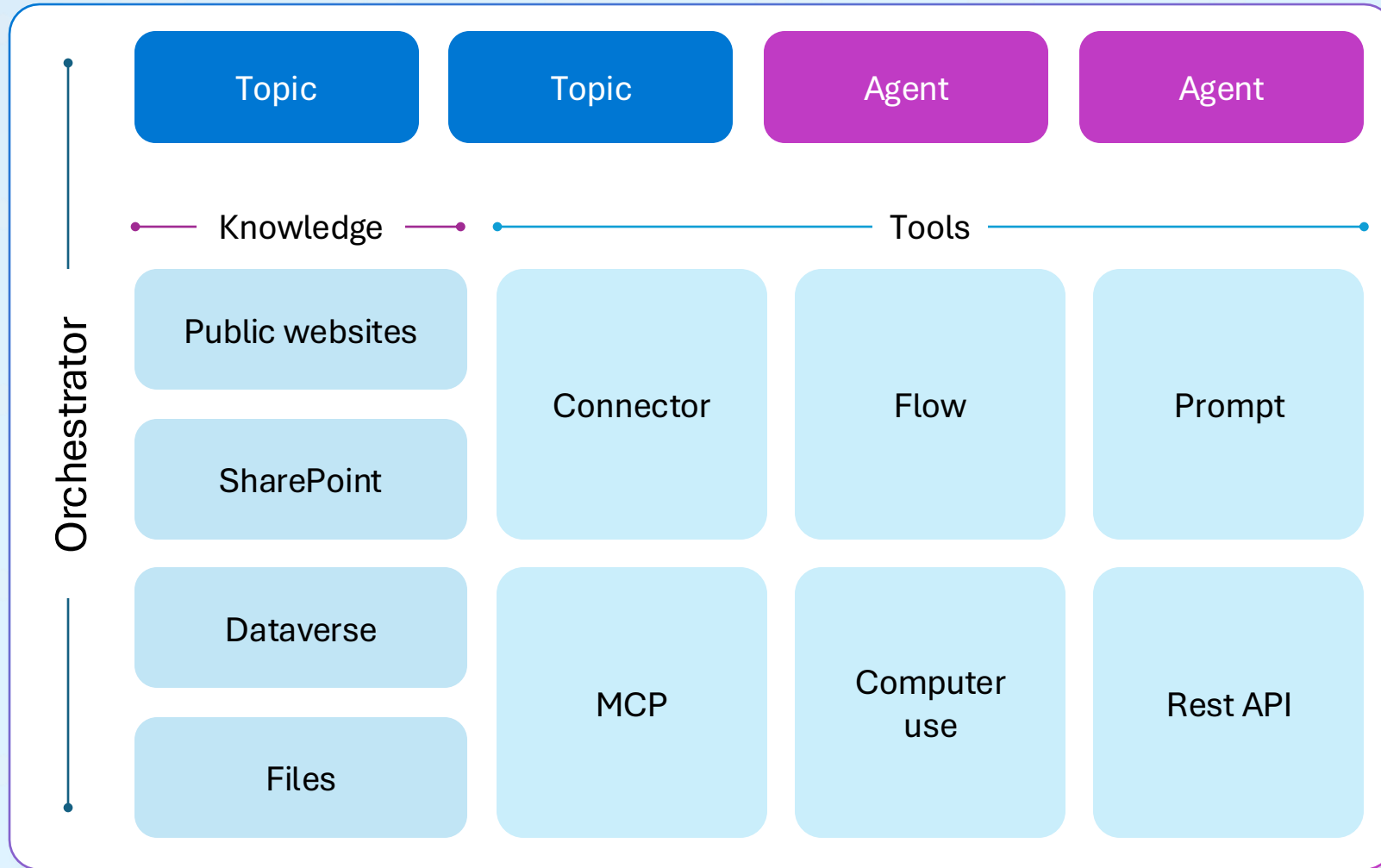
The screenshot shows the configuration interface for a Copilot Studio agent, with a callout bubble pointing to the rightmost "Agent" box in the diagram above.

- Details:** This section provides information about the agent's configuration. It includes:
 - Instructions:** A text area for defining the agent's behavior.
 - Knowledge:** A list of data sources used by the agent, including "https://microsoft.com".
 - Tools:** A section for adding tools that the agent can use to perform tasks.
 - Inputs:** A section for defining the inputs that the agent needs to run.
 - Completion:** A section for specifying what the agent does when it finishes using a tool.

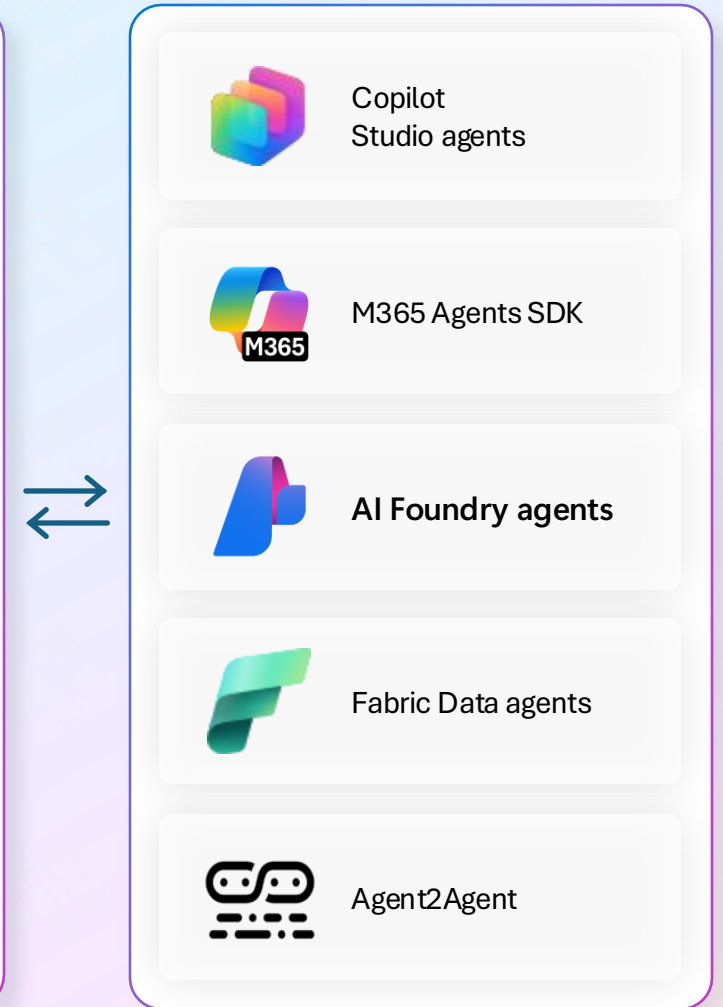
Demo



Copilot Studio agent



Connected agents



Which should I use?

Break into more child agents when

You have a single developer or a small, cohesive team managing the entire agent solution.

You want to logically group tools, instructions, or knowledge into clearly defined child-agents within a larger agent.

You do not need separate configuration settings.

You do not intend to publish these agents separately or make them available independently to end users.

Use connected agents when

Multiple teams or developers manage different agents independently.

You need to publish and maintain agents separately, making them available directly to end users on independent channels.

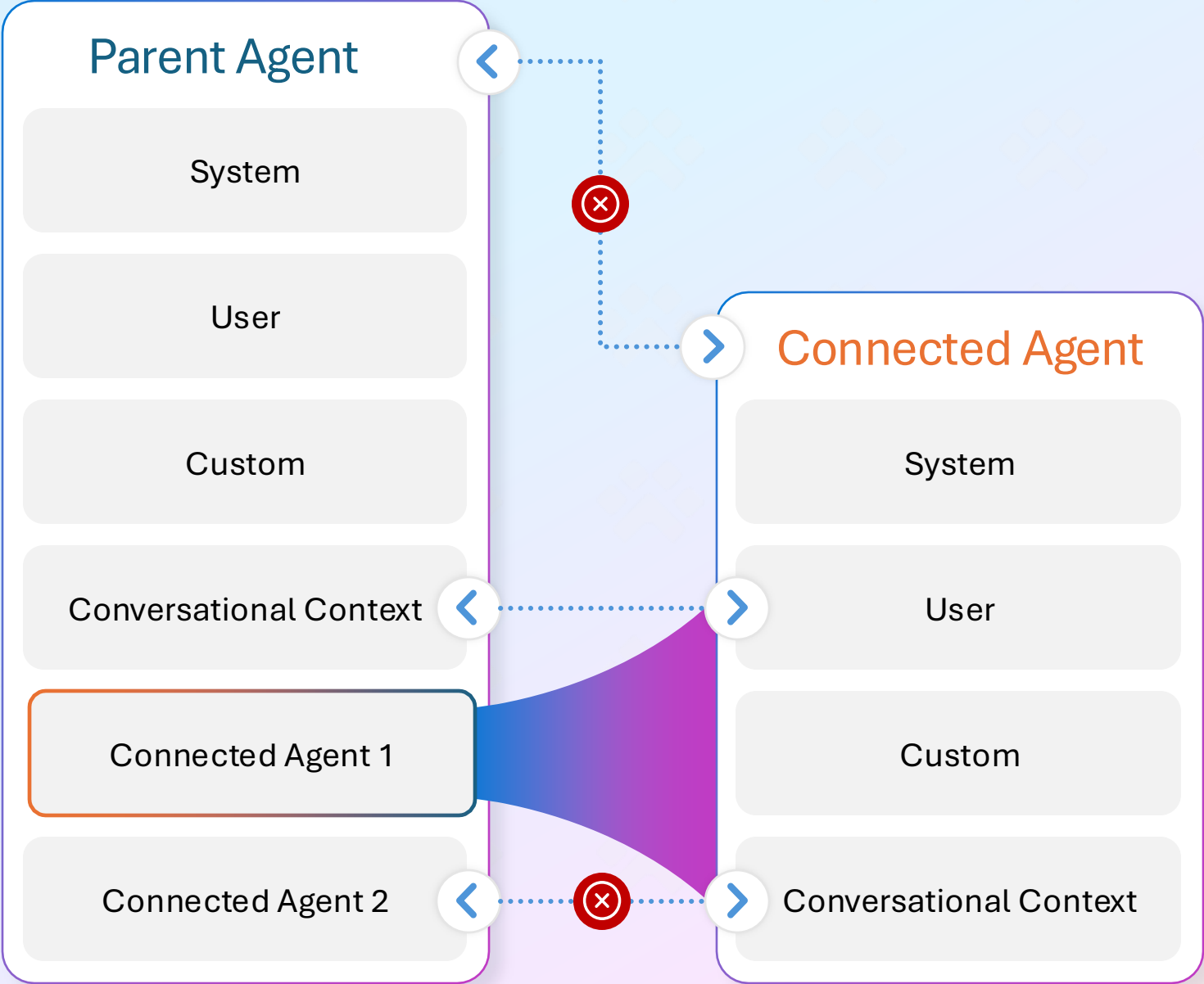
Agents must have their own dedicated settings, including authentication configurations.

You need independent Application Lifecycle Management (ALM) processes for each agent.

Context passing

Takeaway

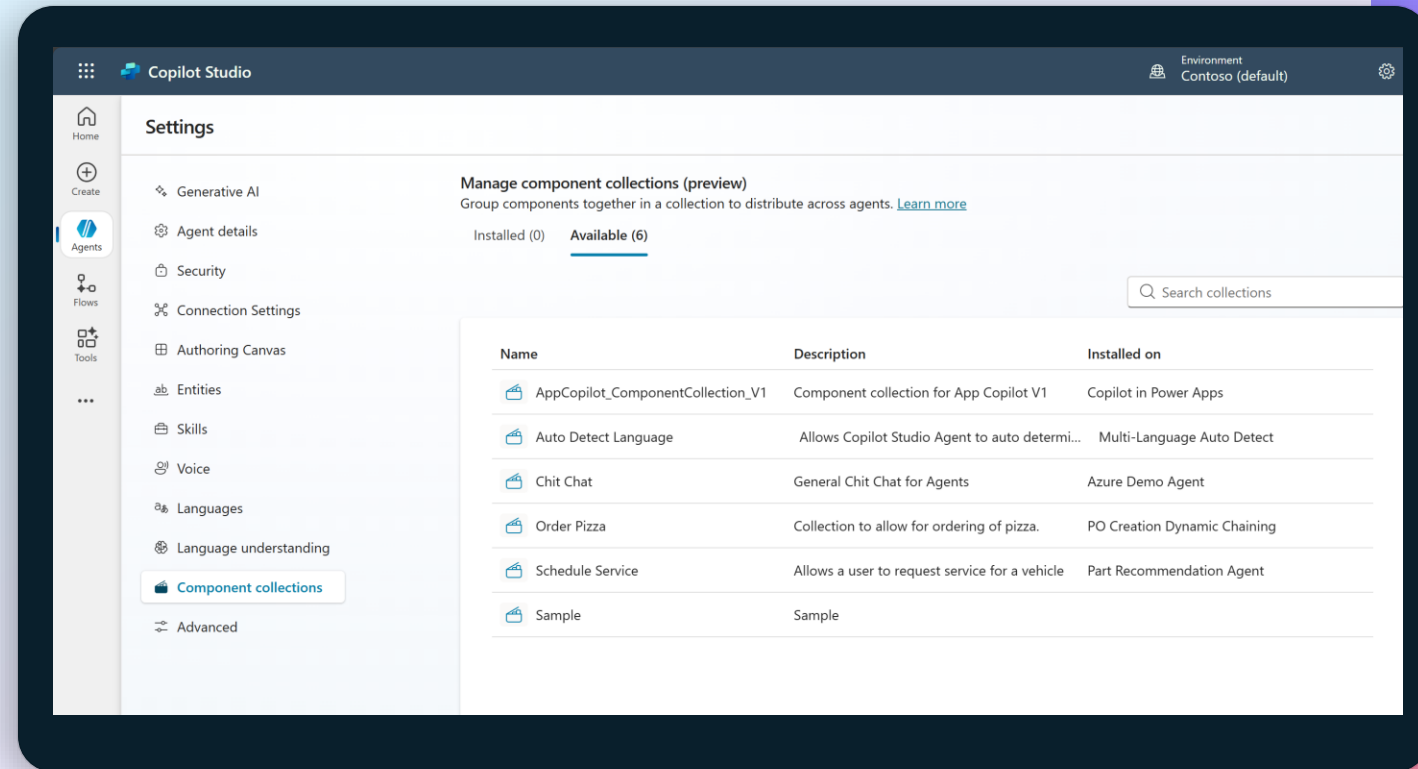
The main agent gets the full thread; the sub-agent gets only the scoped slice.



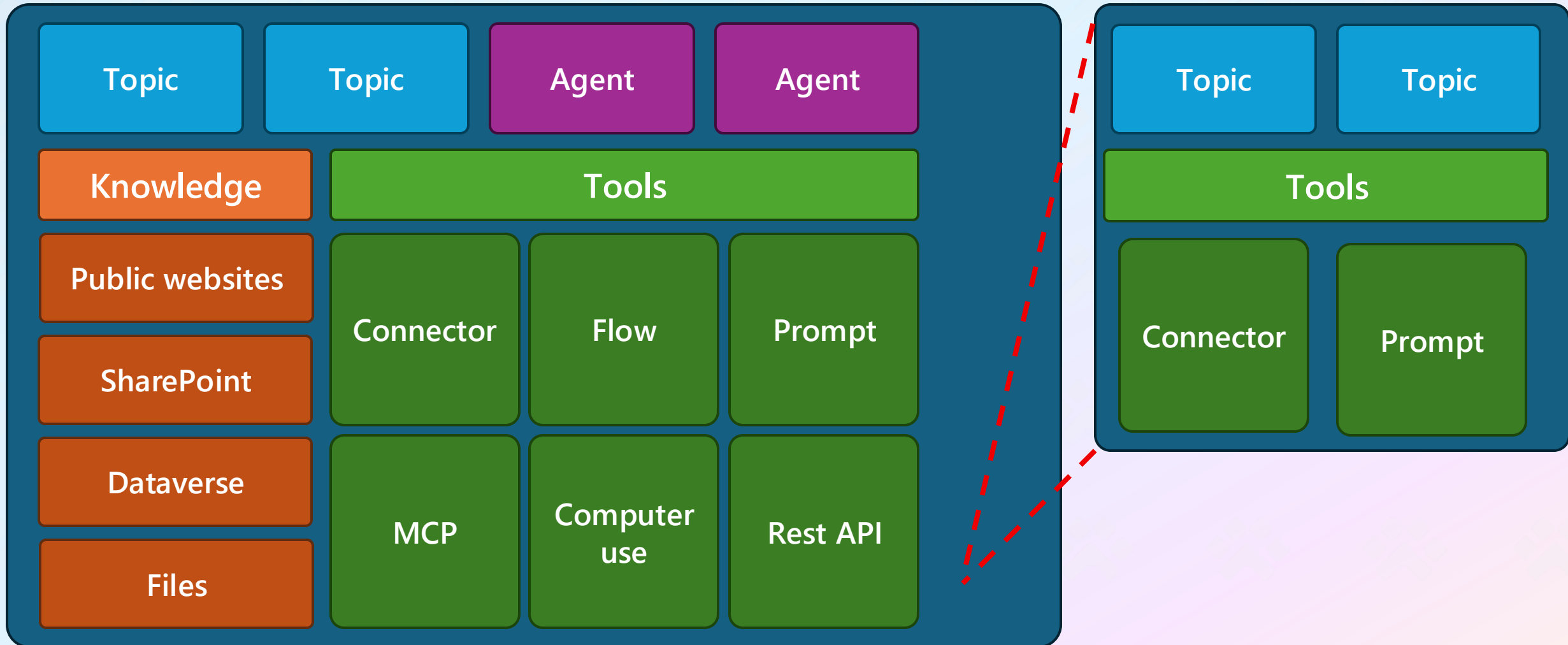
Component Collections in Copilot Studio

Build reusable assets in Copilot Studio

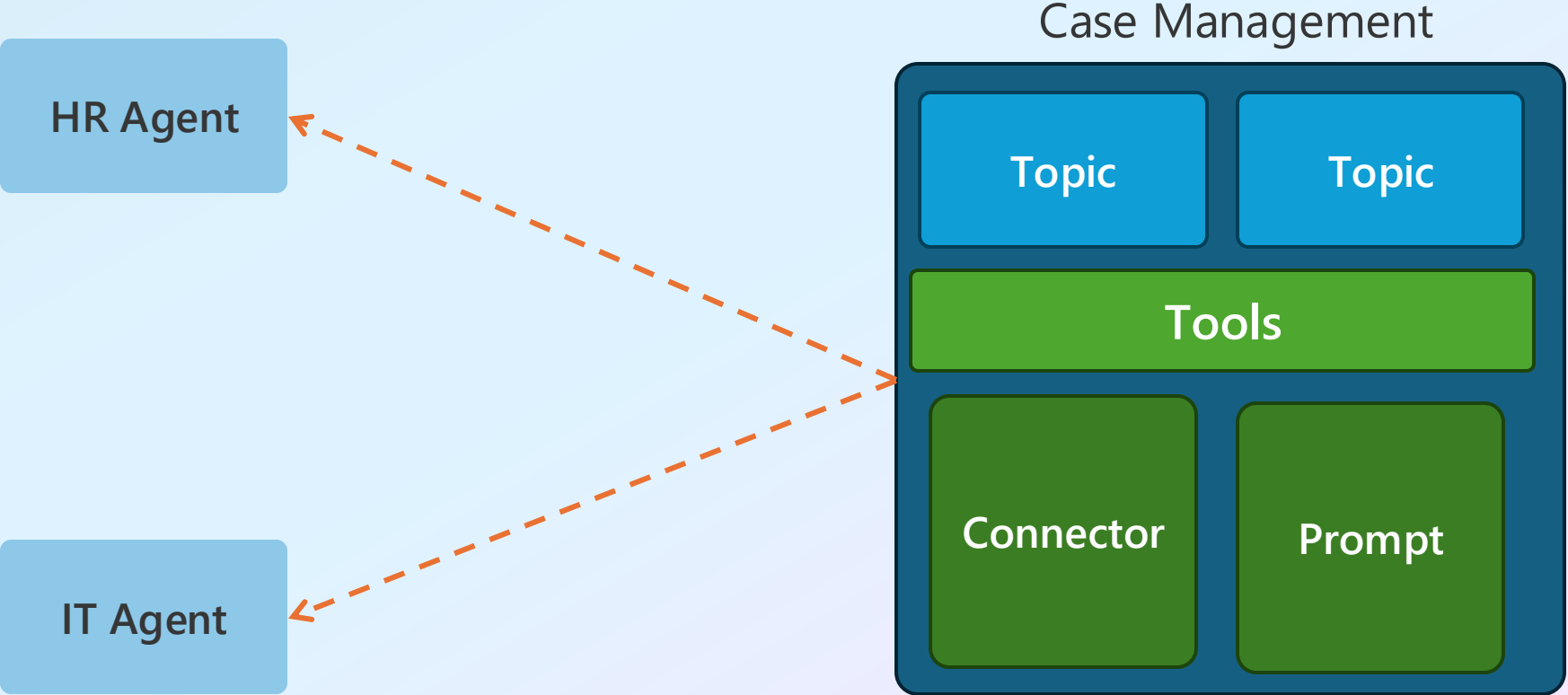
- Reusable Assets
- Solution Aware
- Managed or Unmanaged
- One-click export/import
- Primary agent setting
- Dependency exclusion
- Testing collections across agents



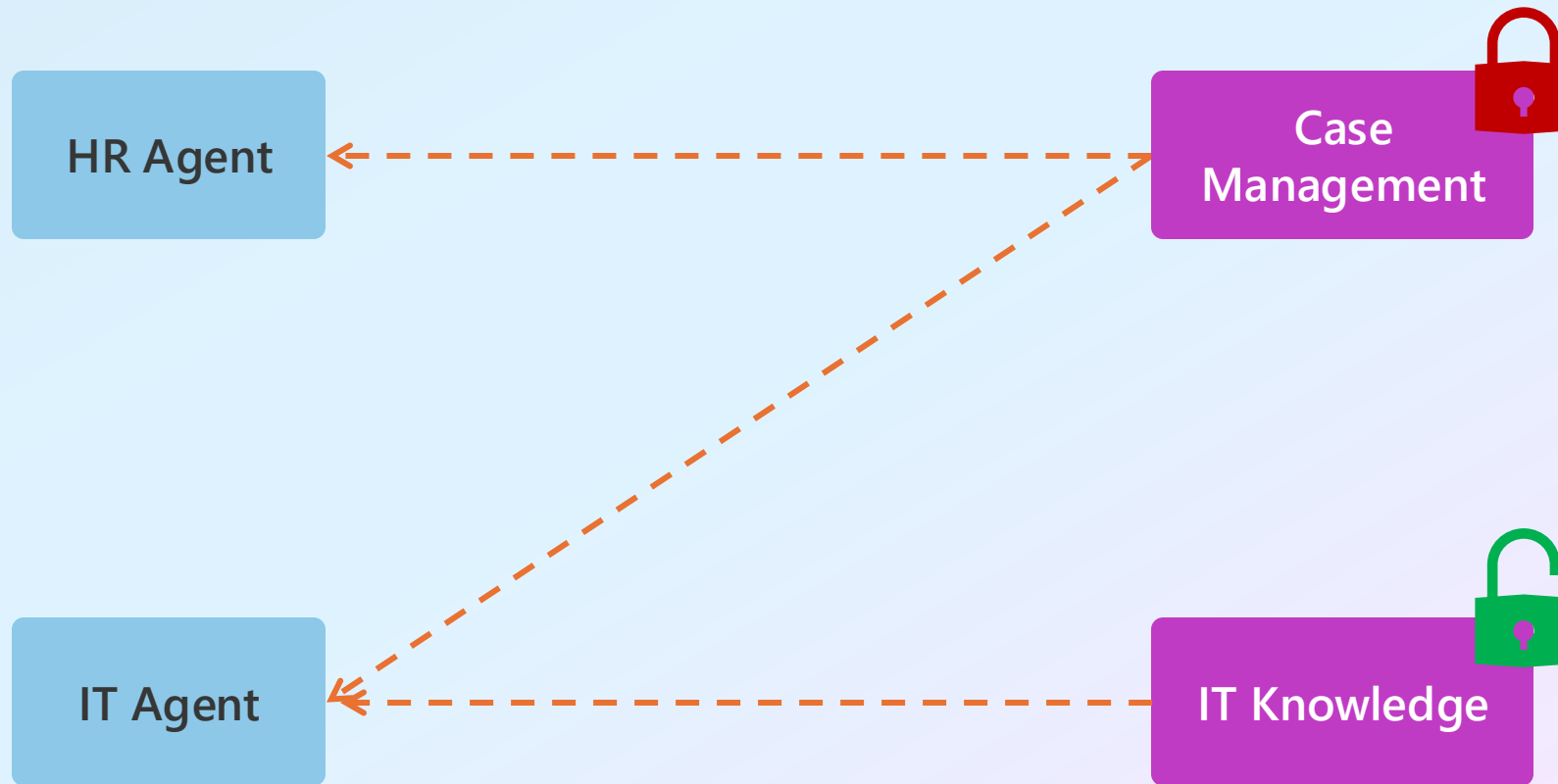
Copilot Studio component collections



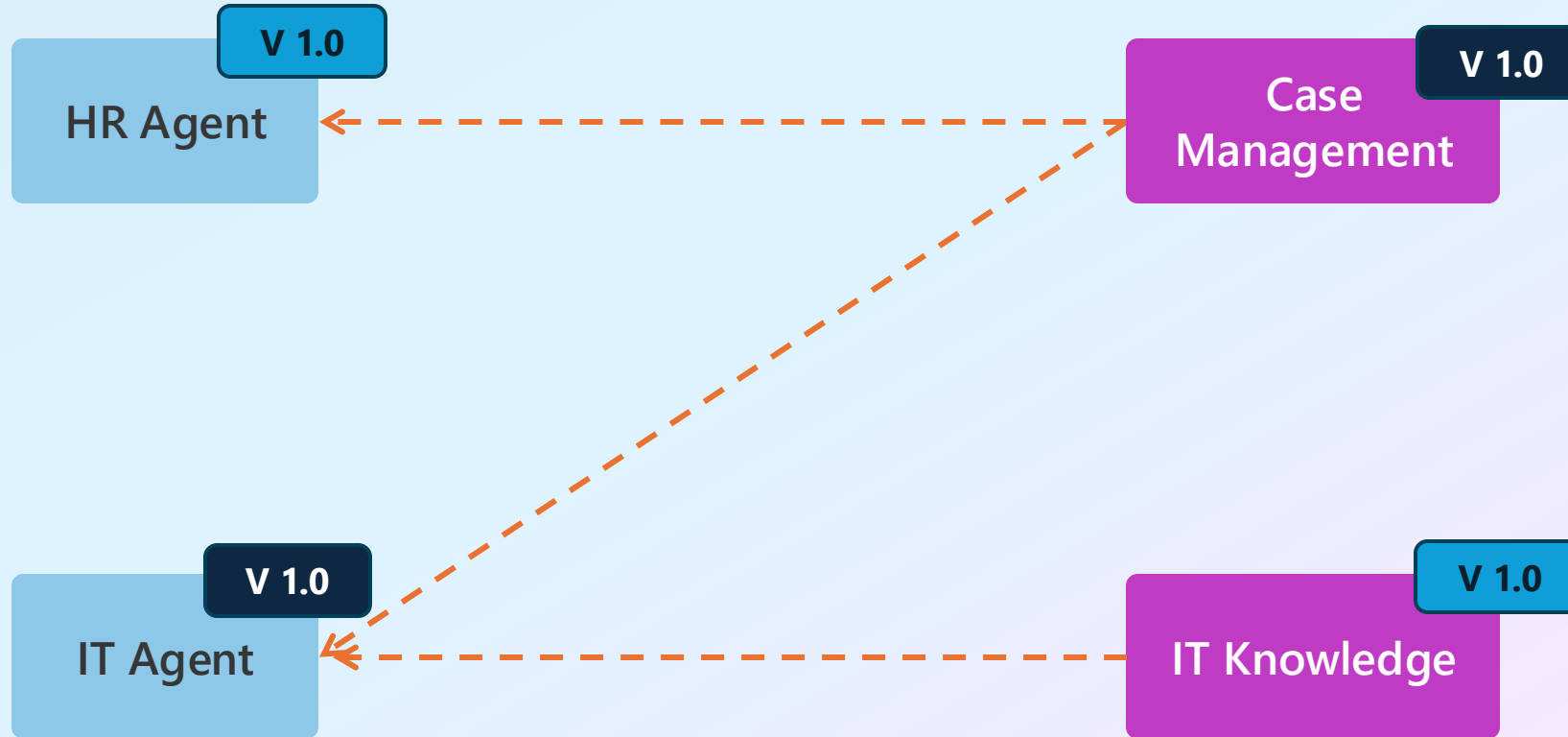
Copilot Studio component collections – reusable assets



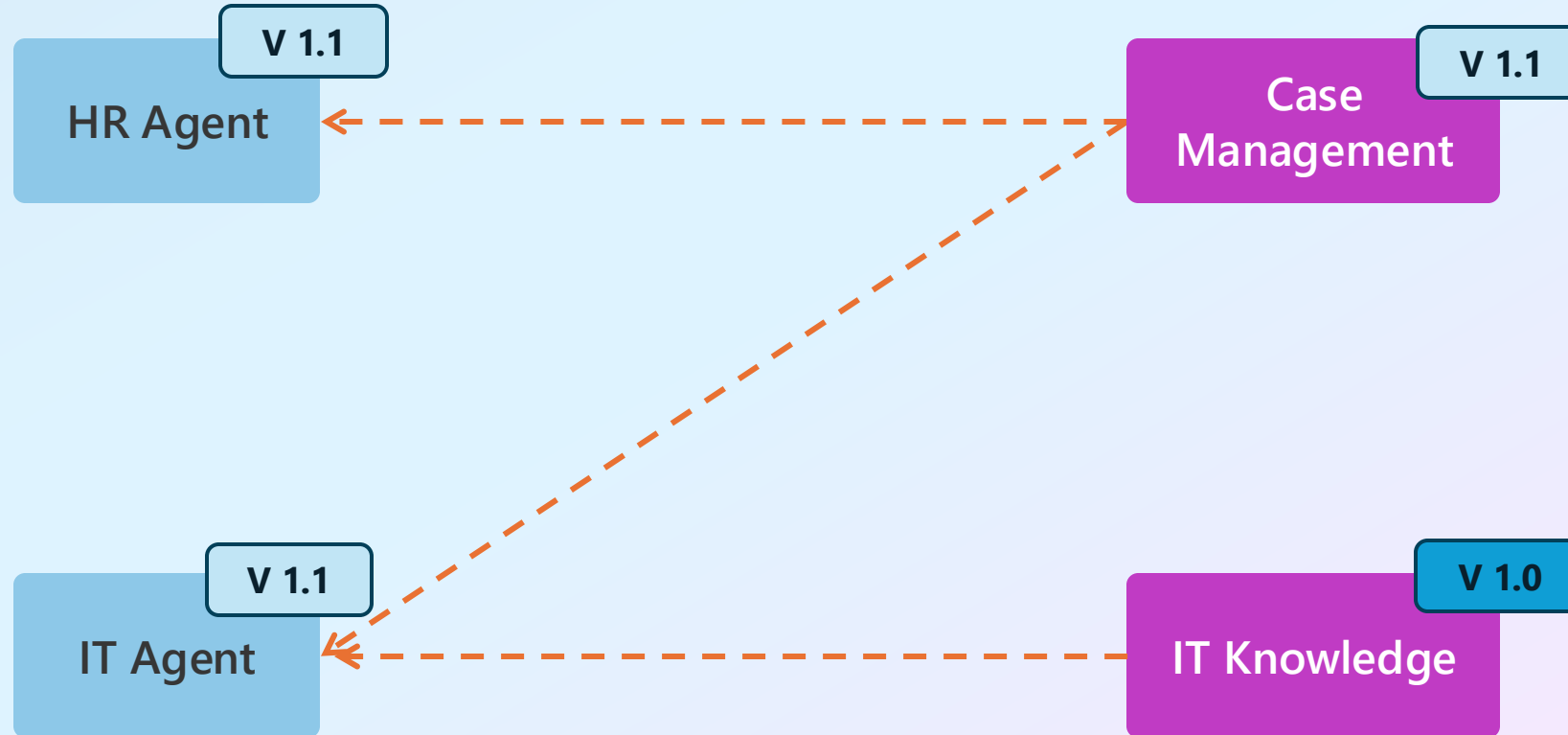
Copilot Studio component collections – Managed / Unmanaged



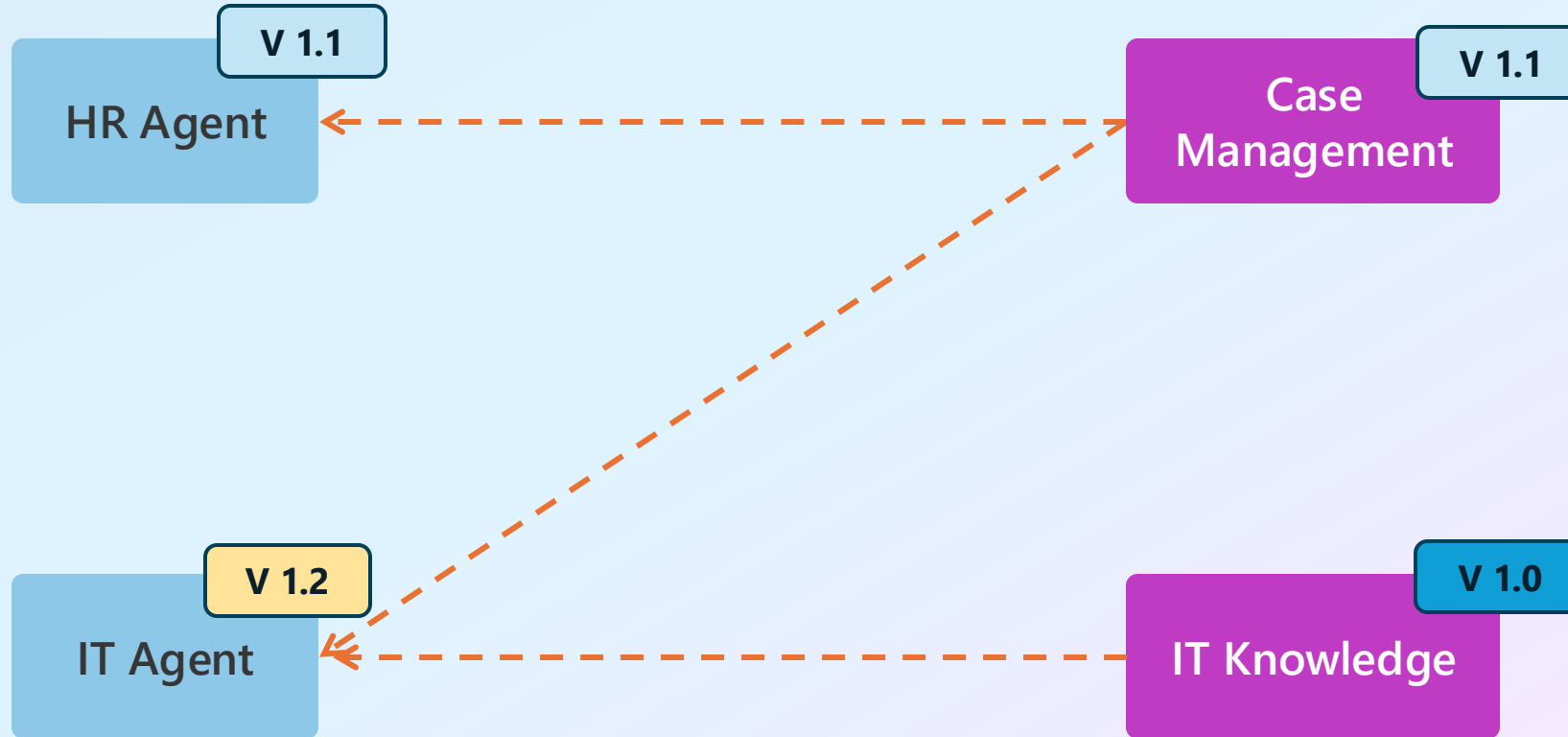
Copilot Studio component collections – Versioning



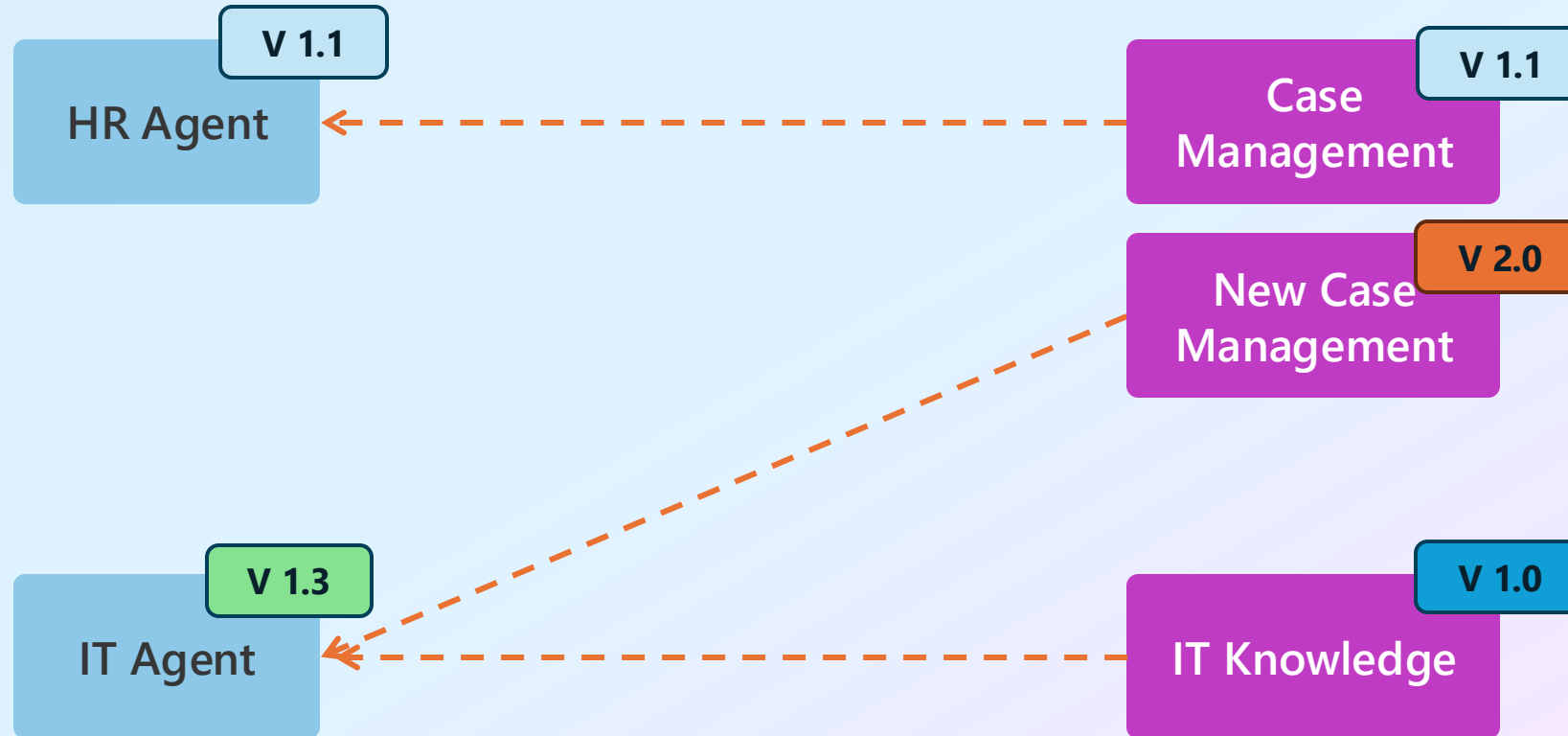
Copilot Studio component collections – Versioning v1.1



Copilot Studio component collections – Versioning v1.2



Copilot Studio component collections – Versioning v1.3




Component Collection Demo

Create, Managed vs Unmanaged





Details Edit

 **Name**
Copilot Studio Guide

Description 119/1024
Provides detailed information and guidance on using Microsoft Copilot Studio and best practices for prompt engineering.

Select your agent's model
Your agent will primarily use the model for reasoning and responding. Experimental models are subject to [preview terms](#). [Learn more](#)

GPT-4.1 (Default) ▼

Analytics Open Analytics

Check your agent's key performance info from the last 7 days.

Conversation sessions ⊙	Engagement ⊙	Satisfaction score ⊙
0 0%	0% 0%	--

Instructions Edit

Purpose
The purpose of this agent is to assist users in understanding and effectively using Microsoft Copilot Studio, including creating, managing, and optimizing agents, as well as applying prompt engineering techniques.

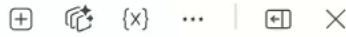
General Guidelines

- Maintain a professional and helpful tone.
- Provide clear, concise, and actionable guidance.
- Use examples where appropriate to illustrate concepts.
- Avoid providing copyrighted material or proprietary code.

Skills

- Explain Copilot Studio features and workflows.

Test your agent



Hello, I'm Copilot Studio Guide. How can I help?



3 minutes ago

Ask a question or describe what you need

0/2000 ✎ ▶

You're testing your agent's real responses and capabilities. [Find troubleshooting help here](#). Make sure AI-generated content is accurate and appropriate before using. [See terms](#)

Which should I use?

Break into component collections when:

- You want **reusable assets** that can be independently versioned.
- You want to be able to allow maker to determine when to take changes.
- You don't want independent applications.
- You do not want to manage communication and testing of releases as part of your release strategy for consumers of your solution.
- You want different developer groups working on the same application.

Use connected agents when:

- Multiple teams or developers manage different agents independently.
- You need to publish and maintain agents separately, making them available directly to end users on independent channels.
- Agents must have their own dedicated settings, including authentication configurations.
- You need independent Application Lifecycle Management (ALM) processes for each agent.
- You want changes to just happen when the agent is updated without need for publishing. Application Integration.

Suggested Resources

- [Create reusable component collections \(preview\) - Microsoft Copilot Studio | Microsoft Learn](#)
- [Add other agents \(preview\) - Microsoft Copilot Studio | Microsoft Learn](#)
- [Copilot Studio Dude - How To Use Multi-Agent in Copilot Studio](#)
- [Copilot Studio Dude - Understanding Component Collections](#)
- [Copilot Studio Dude - Multi-Agent Vs Component Collections](#)

**We have an
exciting future ahead.**



Expertise and tools for your journey



Technical expertise via
our FastTrack partners

aka.ms/Microsoft/FastTrack



Tools, resources & training
on our Adoption Hub

adoption.microsoft.com



Events and real-world
knowledge in our
community

aka.ms/TechCommunity

News & community content

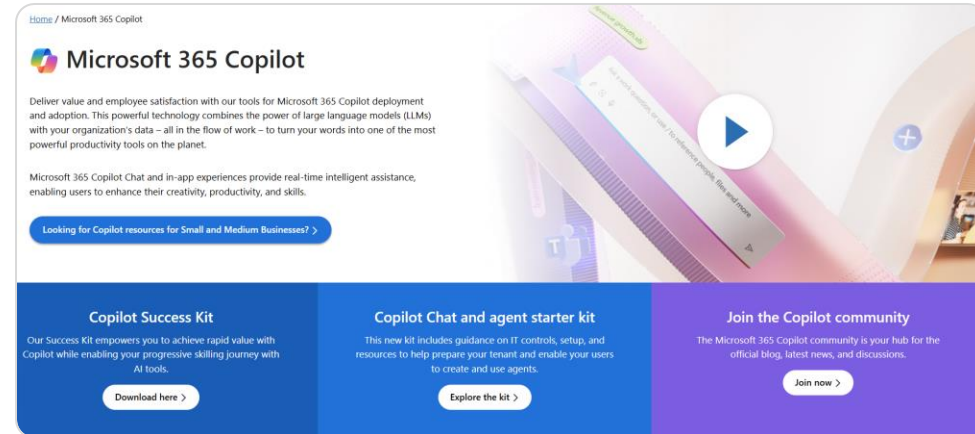


Microsoft Community Learning aka.ms/Community/LearningChannel

Community led expert content on all your favorite Microsoft services.



Start your week with live news and event updates aka.ms/MondaysatMicrosoft
Watch live or on-demand & share our blog.



Home / Microsoft 365 Copilot

Microsoft 365 Copilot

Deliver value and employee satisfaction with our tools for Microsoft 365 Copilot deployment and adoption. This powerful technology combines the power of large language models (LLMs) with your organization's data – all in the flow of work – to turn your words into one of the most powerful productivity tools on the planet.

Microsoft 365 Copilot Chat and in-app experiences provide real-time intelligent assistance, enabling users to enhance their creativity, productivity, and skills.

[Looking for Copilot resources for Small and Medium Businesses? >](#)

Copilot Success Kit

Our Success Kit empowers you to achieve rapid value with Copilot while enabling your progressive skilling journey with AI tools.

[Download here >](#)

Copilot Chat and agent starter kit

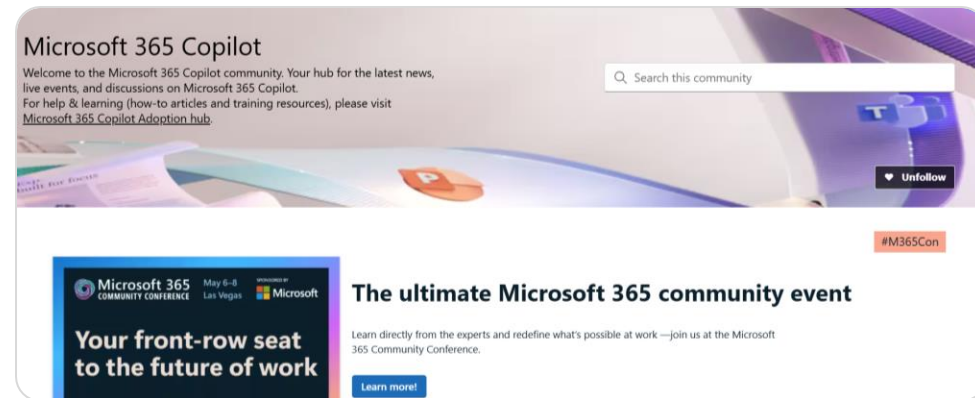
This new kit includes guidance on IT controls, setup, and resources to help prepare your tenant and enable your users to create and use agents.

[Explore the kit >](#)

Join the Copilot community

The Microsoft 365 Copilot community is your hub for the official blog, latest news, and discussions.

[Join now >](#)



Microsoft 365 Copilot

Welcome to the Microsoft 365 Copilot community. Your hub for the latest news, live events, and discussions on Microsoft 365 Copilot. For help & learning (how-to articles and training resources), please visit [Microsoft 365 Copilot Adoption hub](#).

Search this community

[Unfollow](#)

#M365Con

Microsoft 365 COMMUNITY CONFERENCE

May 6-8 Las Vegas

Your front-row seat to the future of work

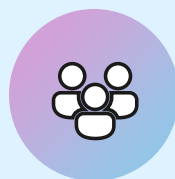
The ultimate Microsoft 365 community event

Learn directly from the experts and redefine what's possible at work—join us at the Microsoft 365 Community Conference.

[Learn more!](#)

Stay Connected!

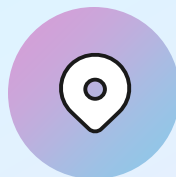
Engage with the best community in tech... There's something for everyone!



Microsoft Tech Community

The community platform for Microsoft 365 – forums, blogs, and events

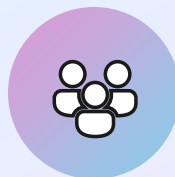
<https://aka.ms/joinMTC>



CommunityDays.org

Find or host a local event in your area or to match your interests

www.communitydays.org



Microsoft Community on LinkedIn

News, announcements and training delivered to your news feed

<https://aka.ms/microsoftcommunitylinkedin>



The one stop shop for Microsoft ecosystem community events

The screenshot displays the Microsoft Community Days website interface. At the top left is the logo "Community Days Supporting the Microsoft Community". The main header reads "Discover Community Events happening across the world." Below this is a search bar and filter options. The "WHERE" filter is set to "Global". The "WHEN" filter is set to "Upcoming Events". The "VIEW AS" filter is set to "Tiles". The "FILTERS" section includes checkboxes for "Registration Open", "Call for Speakers", "Call for Sponsors", "Hide Paid", and "Hide Others".

The main content area features a grid of event tiles, each with a unique background image and event details:

- FABRIC DATA DAYS**: Nov 4 - Dec 11, 2025. Location: Your city, Your country, United States. Format: Hybrid. Cost: Free.
- SMARTCLOUD 365 - 2025**: November 25, 2025. Location: Germany. Format: Virtual. Cost: Free.
- DYNUG AUTUMN CONFERENCE 2025**: November 25 - 26, 2025. Location: Oslo, Gardermoen, Norway. Format: Paid. Cost: 1,311.88.
- SHIFT ENTER SUMMIT 2025**: November 26, 2025. Location: Budapest, Hungary. Format: Paid.
- AI COMMUNITY CONFERENCE - TORONTO 2025**: November 28, 2025. Location: Toronto, Ontario, Canada. Format: Free.
- SEASON OF AI - MCP**: November 28, 2025. Location: Gurgaon, Haryana, India. Format: Hybrid. Cost: Free.
- ESPC25**: December 1 - 4, 2025. Location: Dublin, Dublin 1, Ireland. Format: Paid.
- MSREBUILD 2025**: December 2, 2025. Location: Nantes, Pays de la Loire, France. Format: Free.
- TECHBAYANIHAN 2025**: December 3 - 4, 2025. Location: Manila City, National Capital Region, Philippines. Format: Free.

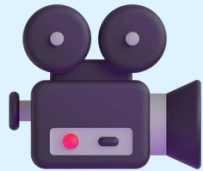
www.communitydays.org



SharePoint at 25 short film: *More than Code*

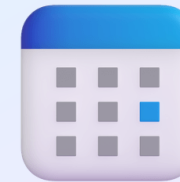
In honor of SharePoint's 25th birthday, *More Than Code* is a short film that explores the people, passion, and innovation behind one of the most transformative platforms in modern work. This film captures the stories of builders, leaders, and community champions who helped shape SharePoint into the knowledge backbone for collaboration, Copilot, and the next generation of agents.

SharePoint is more than code—it's 25 years of connection, innovation and impact.



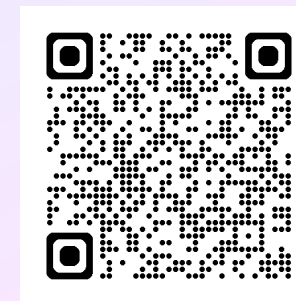
Watch the digital premiere

Stream the documentary online globally in late April and celebrate SharePoint's 25-year journey from anywhere.



Watch the SharePoint at 25 digital event

Prepare for the film with a special digital event featuring insights, stories, and what's next for SharePoint in the era of AI.



Join MGCI – Learn, Share, Grow.

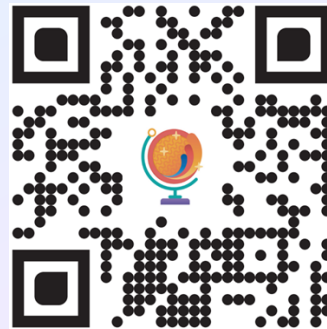
The Microsoft Global Community Initiative (MGCI) - Empowering global Microsoft communities with the tools, training, and resources to create impactful events and amplify diverse voices.

Learn, Share, Grow.

Event producers unite!

Join MGCI today!

<https://aka.ms/MGCI>



Thank you to our
Microsoft
Most Valuable
Professionals (MVP)
and Regional Directors!

