



Microsoft 365
COMMUNITY CONFERENCE

Partner Spotlight: Microsoft 365 Backup from Veeam

Saumitra Bhide & Tony Clayton

Whova

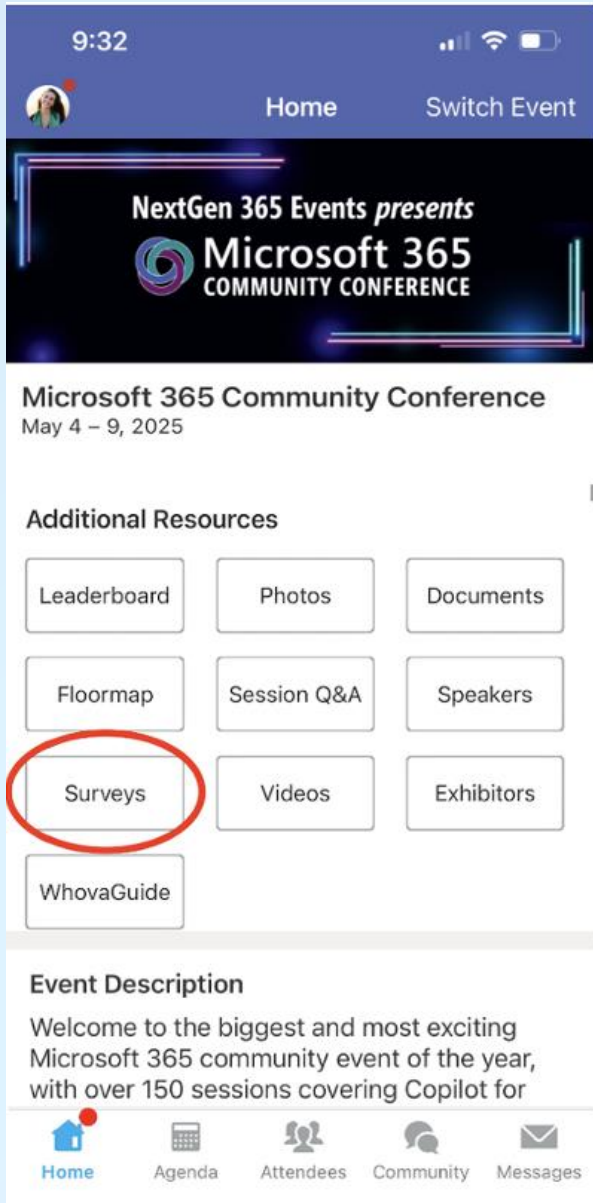


The official event app for the
Microsoft 365 Community Conference

Event invitation code: TBA

Join the event app to access:

- ➔ Event announcements
- ➔ Personalized agenda, session details
- ➔ Speaker & attendee profiles
- ➔ Networking, meet-ups, messages
- ➔ Event documents



Session feedback surveys

We want to hear from YOU!

Share your feedback to make next years conference even better!

Here's how –

- Simply go to the Whova App on your smartphone.
- Scroll down on the M365 Community Conference Homepage to 'Additional Resources' to click "Surveys".
- Click Session Feedback.
- Scroll down to find this session title.
- Complete the session feedback survey.
- Finally, click 'Submit'.

It's just that easy!



Saumitra Bhide

Principal Product Manager
Growth, Monetization,
Partnerships
/Saumitra-Bhide



Tony Clayton

America's Sales Lead
Veeam Data Cloud
/tonyclayton



Karinne Bessette

Technologist, Microsoft 365
Lead | Product Strategy -
Product & Community
/RinBytes

Microsoft 365 Backup

Deliver resiliency & business continuity
in an AI era

A new world of data growth acceleration...



Organic content
growth



Migrations into
Microsoft 365

>2 billion new files added daily to Microsoft 365!

Autonomous ransomware is emerging¹

AI amplified data-loss

—
Adaptive attacks

Accidental deletions

—
Incomplete data

Accelerated attacks

—
AI-powered exploits

Shared responsibility model

Responsibility	SaaS	PaaS	IaaS	On-prem
Information and data	Customer	Customer	Customer	Customer
Devices (Mobile and PCs)	Customer	Customer	Customer	Customer
Accounts and identities	Customer	Customer	Customer	Customer
Identity and directory infrastructure	Shared	Shared	Customer	Customer
Applications	Microsoft	Shared	Customer	Customer
Network controls	Microsoft	Shared	Customer	Customer
Operating system	Microsoft	Microsoft	Customer	Customer
Physical hosts	Microsoft	Microsoft	Microsoft	Customer
Physical network	Microsoft	Microsoft	Microsoft	Customer
Physical datacenter	Microsoft	Microsoft	Microsoft	Customer

Responsibility always retained by the customer

Responsibility varies by type

Responsibility transfers to cloud provider

Microsoft Customer Shared

Add resiliency with Microsoft 365 Backup



High-availability and disaster recovery

- Physical redundant copies
- Service side resiliency



End-user and site-level capabilities

- Short timeframe
- Recycle bin
- Soft deletes
- Designed for low volume

Microsoft 365 built-in coverage



Microsoft 365 Backup provides tenant-level:

- Rapid mass restore
- Mission critical info
- Entire tenant coverage
- Designed for any size organization

Microsoft 365 Backup

Get the ability to restore quickly

- Add resiliency against ransomware attacks and accidental or malicious modifications
- Ensure compliance with regulatory requirements
- Maintain business continuity with minimal downtime



Speed

Fast backup and restore of OneDrive, SharePoint, and Exchange Online, data at mass scale within hours – not weeks or months



Security

Maintain security and compliance by staying within the Microsoft 365 trust boundary



Flexibility

Leverage a consistent underlying technology via Microsoft's native application or from partner-developed applications built on the Microsoft 365 Backup Storage platform

The problem with traditional backup alone

Without Microsoft 365 Backup



**Full tenant
restore in hours¹**

Restore data up to

3 TB+

per hour at scale²

1. Based on average-sized tenants
2. [Microsoft internal research, 2025](#)

Tenant wide, Site level, Granular restore

Simplify compliance, enhance security, and support data residency



Automatic geo
residency adherence



Data access and scope
are strictly limited

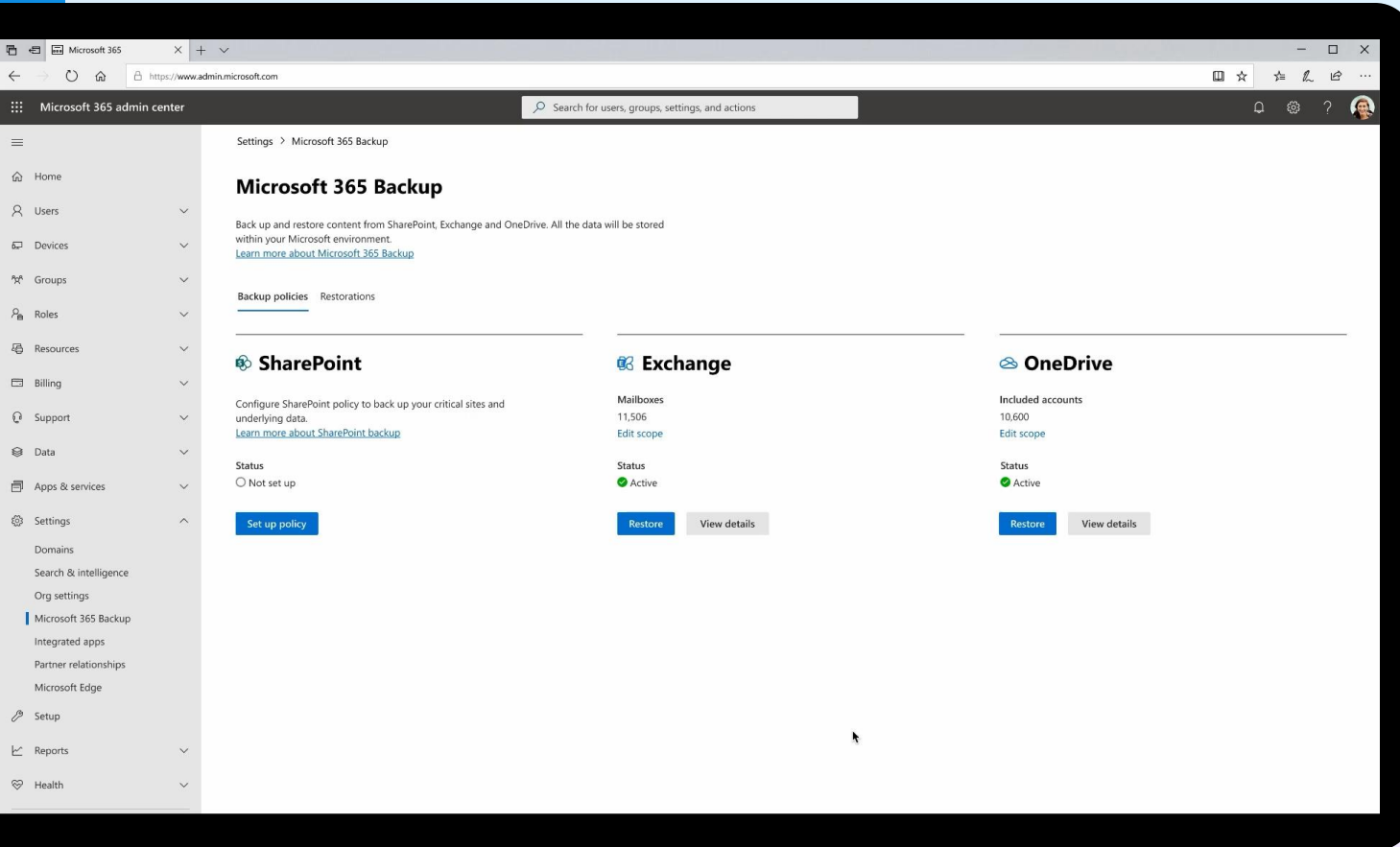


Actions fully
auditable



Append-only
backup storage

Enabling Microsoft 365 Backup



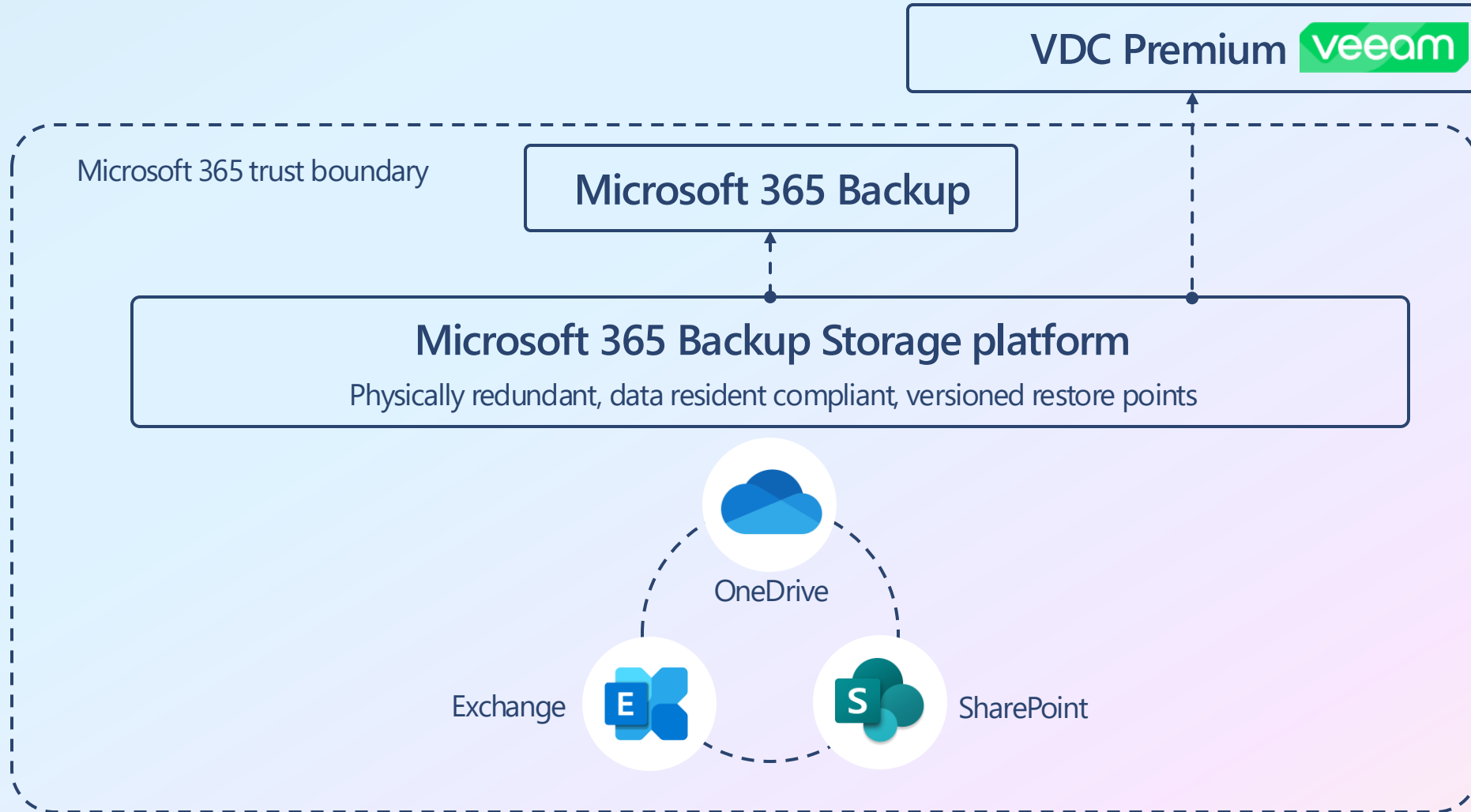
Learn more

aka.ms/M365Backup

Find a partner solution

[aka.ms/M365BackupStorage/
Partners](https://aka.ms/M365BackupStorage/Partners)

Microsoft 365 Backup is a fast, scalable, and secure solution



**You're not
just buying
backup;
you're
buying the
ability to
restore**



Back up and
restore
data fast



Add
resiliency
against
cyberattacks



Manage on
your
own terms

veeam

Veeam + Microsoft Data Protection Solutions

The Fundamental Shift

101 days

Average breach discovery time
without security tools*



TRADITIONAL RANSOMWARE

- Deploys malware to encrypt critical files across endpoints within the compromised network infrastructure*
- Attackers negotiate for decryption keys after locking access to essential business systems and data
- Relies on endpoint-based malware deployment and file encryption as primary attack mechanism

24-48hours

Time for attackers to gain
complete network control*



CLOUD-BASED RANSOMWARE

- Leverages cloud-native capabilities to rapidly exfiltrate large volumes of data without traditional malware*
- Destroys data and backups within victim environment using legitimate cloud APIs and administrative tools*
- Demands ransom after complete data exfiltration and destruction, preventing recovery from backups

<https://www.microsoft.com/en-us/security/blog/2025/08/27/storm-0501s-evolving-techniques-lead-to-cloud-based-ransomware/>

Plan Your Protection



Surge in Cyber Threats

600M

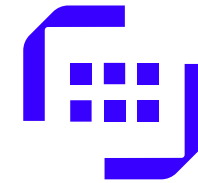
Daily cybercriminal & nation-state attacks per day.



Ransomware Impact

1 in 4

Organizations paid the ransom and never got their data back.



Identity is at risk

30%

Of breaches are due to compromised identities

Sources: Microsoft Digital Defense Report 2024; Veeam 2024 Ransomware Trends Report; Verizon 2024 Data Breach Investigations Report

Protect Your Data

Your data, **YOUR** responsibility.

Perception



All data is backed up



My accounts can't be hacked



Mistakes are easily corrected/reversed



Microsoft will handle compliance for me

Reality



Data is **NOT** backed up, it's operationally maintained



Incidents can occur



Mistakes are not always easily identifiable or fixable



YOU are responsible for you meeting your compliance goals

Why Protect Microsoft 365 & Entra ID

Microsoft

Learn more about [Microsoft's Shared Responsibility Model](#)

Primary responsibility

**MICROSOFT GLOBAL
INFRASTRUCTURE**

Uptime / availability of
Microsoft
cloud services

**YOUR MICROSOFT 365
DATA**

Access to services and
control / protection
of your data

Customer

Increasing complexity



Security threats including
ransomware, malware,
**malicious insiders, or accidental
deletion/mistakes**



Legal and compliance
requirements



Cyber-Insurance
requirements to ensure data
is recoverable



Exponential growth in data
with 2.5 billion new docs in
Microsoft 365 every day

Cost of Microsoft 365 & Entra ID Loss

01

Business Disruption

Operations grind to a halt across every department

02

Revenue Loss

Canceled transactions, missed sales, and stalled renewals

03

Regulatory Penalties

HIPAA, SOX, and GDPR violations trigger fines and investigations

04

Reputation Damage

Long-term erosion of customer trust and brand credibility

Every industry depends on identity. Without it, nothing works.

Healthcare can't treat patients. Banks can't process payments. Insurers can't settle claims. Retailers can't complete sales.

Protect your identity. Protect your business.

Meet Veeam Data Cloud

Veeam Leadership

25M+

Protected M365 Users

PLATINUM PARTNER



Veeam Data Cloud

Veeam Data Cloud with Microsoft 365 Backup Storage provides incredibly fast backup and recovery of large data sets. Veeam's fusion with Microsoft's AI capabilities offers smarter data management, predictive analytics, and proactive issue resolution.

#1

Global market share in
Data Protection Software



#1

Magic Quadrant,
ability to execute

Gartner

Security Strategy Pillars

Critical elements to defend against threats and day-to-day operational issues



PREVENTION

Solutions, tools & services



DETECTION & RESPONSE

Solutions, tools & services



RECOVERY

Solutions, tools & services



Strong Governance Ensures Accountability and Trust

- **Integration with frameworks** like NIST, ISO 27001, and GDPR to ensure compliance
- **Clear roles and responsibilities** for cyber incident response
- **Audit trails, reporting, and policy enforcement** to meet regulatory requirements
- **Cyber insurance alignment** to reduce risk exposure

Solutions & tools

Veeam ONE, Veeam Data Resilience Maturity Model (DRMM), Veeam Quarterly TTP Reviews

Veeam Data Cloud

The Unified Cloud for Data Resilience



Shared services

Modern Multi-Workload UI/UX

Protected workloads



Industry leading technology

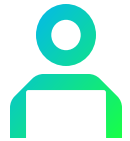
Gartner. IDC

Cloud-native SaaS platform

Microsoft

Identity as the Connective Tissue

Identity is no longer just an access layer, it is the control plane connecting your entire ecosystem.



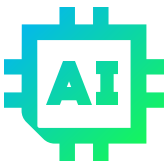
Human Users

Administrators and employees accessing SaaS resources.



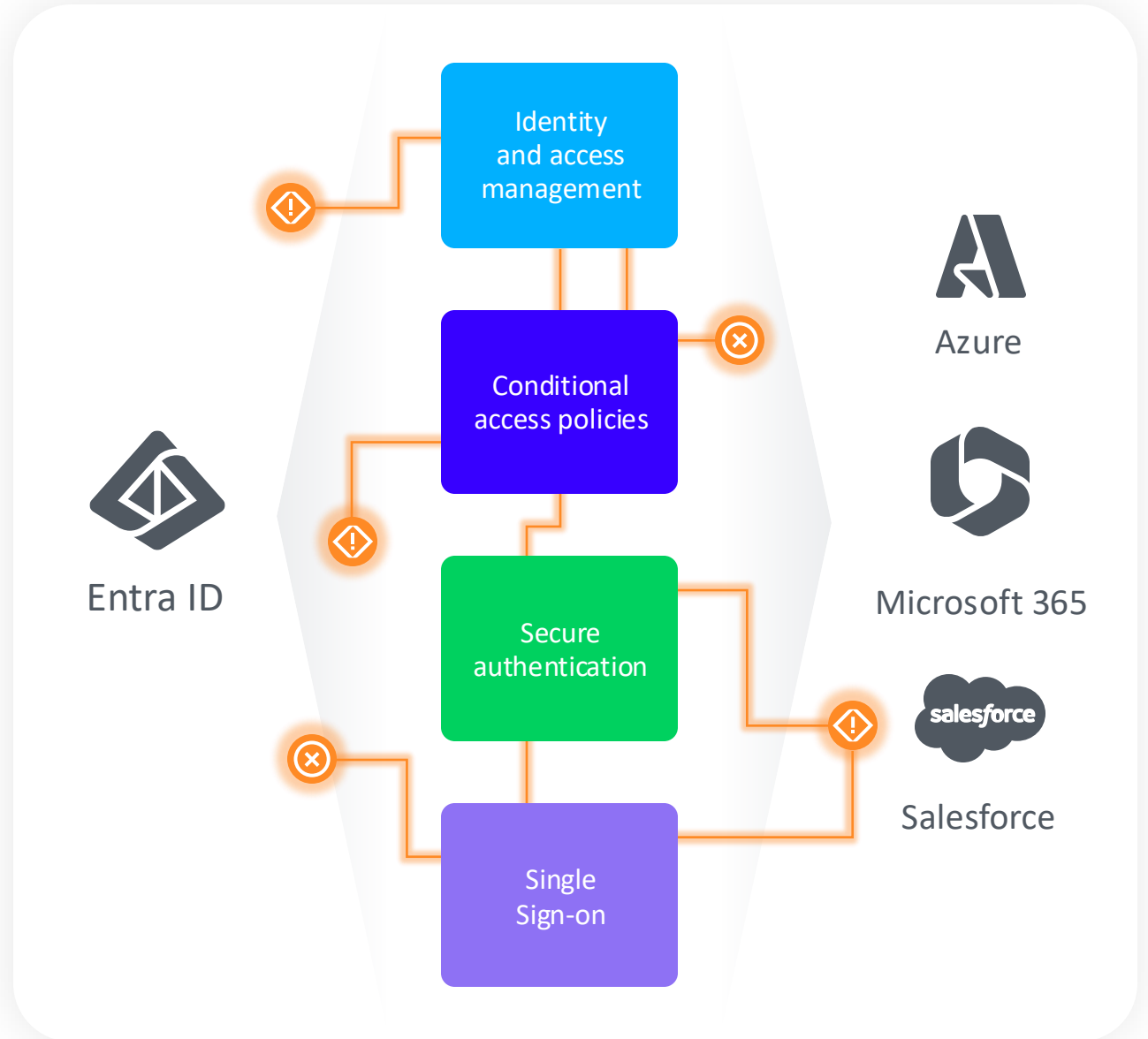
Machine Entities

Cloud automation and hybrid infrastructure.

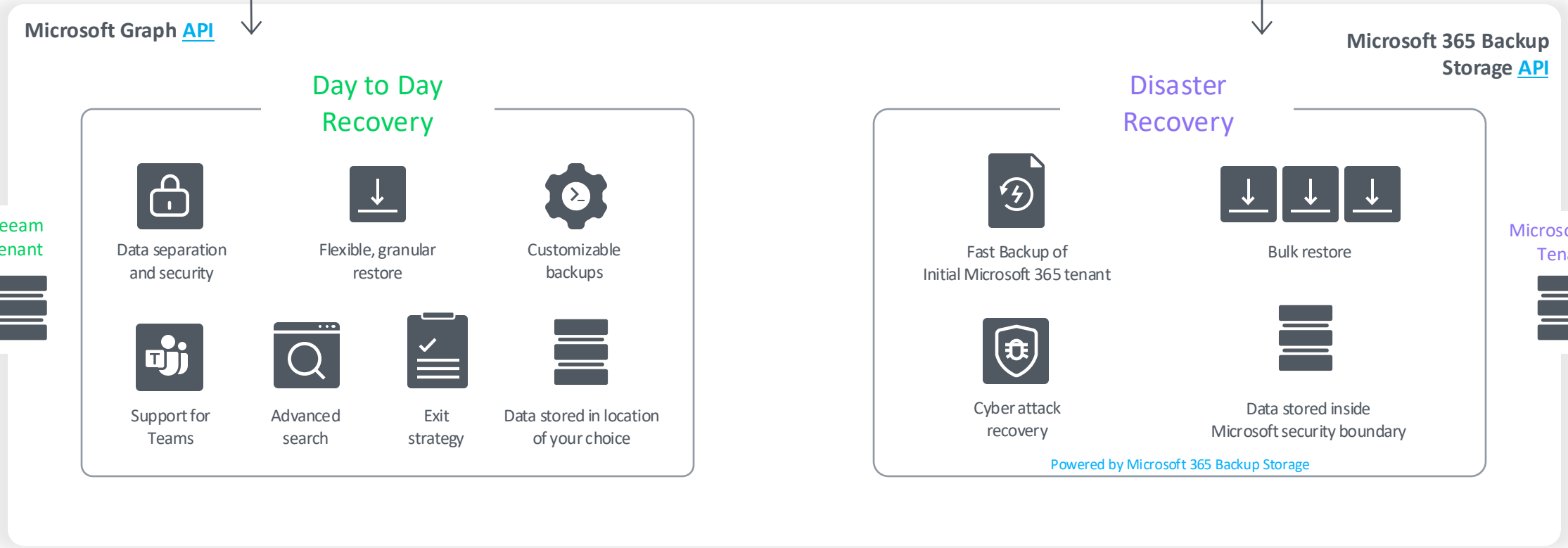
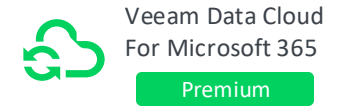


AI Agents

Autonomous service principals with extensive permissions and access across workloads.



Veeam Data Cloud for Microsoft 365 & Entra ID



Two Pillars of Microsoft 365 & Entra ID Resilience



Veeam Data Cloud
For Microsoft 365

Premium



Day to Day Recovery Capabilities

Control and Flexibility

- Normal admin or helpdesk requests
- Small-scale user or AI agent error
- Accidental deletions, overwrites, or file corruption
- Legal/HR/Compliance requests recovery of specific emails or files

Disaster Recovery Capabilities

Speed and Scale

- Insider sabotage
- Ransomware
- Large-scale human error or AI agent error
- Especially important with large volume of users or data and speed of recovery is important

Backup & Restore: Speed Comparison



Day to Day Recovery

API Used:

Traditional Export (Graph) API

Granular, item-level
Optimized for small volumes

Speeds of 1TB-3TB per **day**

50TB tenant could take
2-3 weeks to be protected / recovered

Which API
should I use?



Disaster Recovery

API Used:

Microsoft 365 Backup Storage API

Large-scale restores in bulk
Optimized for large volumes

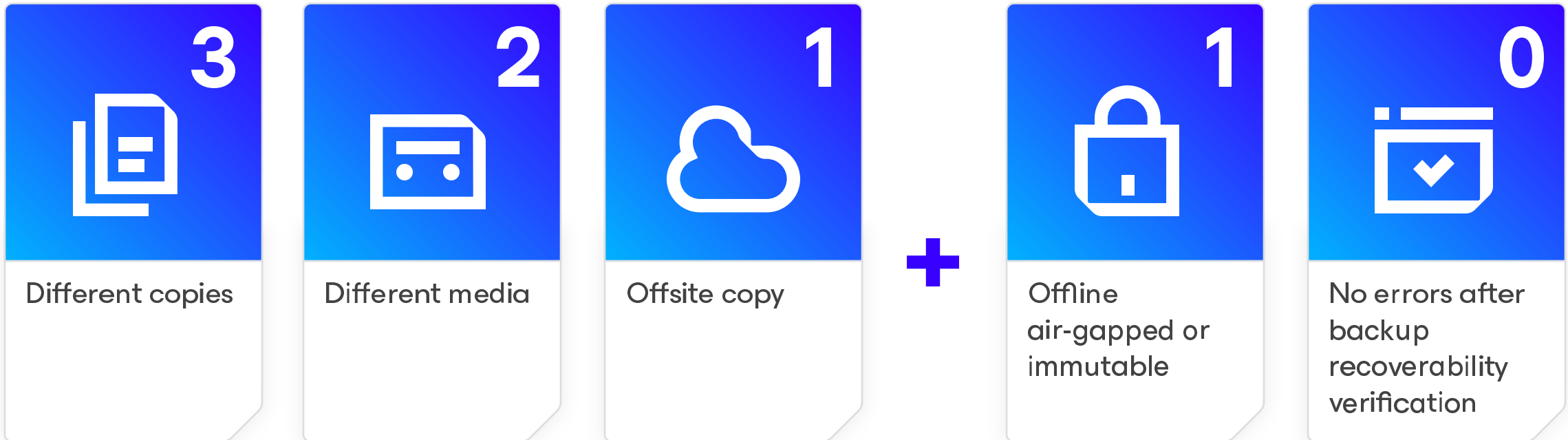
Speeds of 1TB-3TB per **hour**

50TB tenant could take
1 day to be protected / recovered

You need both!

Being forced to choose leaves your business at risk from one of these common use cases.

To ensure recoverability you need: 3-2-1-1-0 Rule



Everything is included

Software, infrastructure, unlimited storage, and expert-managed maintenance — all included

Veeam Data Cloud for Microsoft 365

Veeam-managed service delivery

Core components



Veeam Server



Proxies



Unlimited storage

Operations



Networking



Infrastructure management



Maintenance

Automation



Updates



Patches



Network security

User-controlled

Backup



Create backup jobs

Restore



Recover quickly & easily

eDiscovery



Advanced search and find

Optional configuration:

Backup Operations

Customize your backup

Alter retention period

Storage region of your choice

Security

Role Based Access Control

Restrict access by IP range

Diversify storage repositories

Analytics

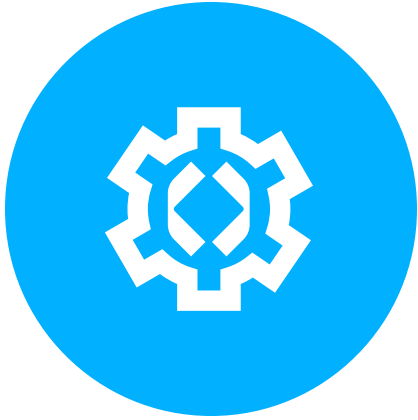
Generate reports

Manage licenses & monitor activity

Export logs to SIEM

Microsoft + Veeam

Veeam's added value beyond native Microsoft capabilities



Predictable pricing

Per user instead of capacity based ensures consistent monthly costs.

Data growth will not negatively impact your budget



Granular recovery

Granular restores not available for Exchange, OneDrive, and SharePoint.

Combines to support the value of the Premium plan



Teams support

Veeam provides backup and restore of Microsoft teams with Flex.



Additional capabilities

Enhanced security access (RBAC, MFA, IP Address ranges), export user activity to SIEM and data separation for compliance.

Veeam innovation additive to Microsoft technology

Customer Stories

Global Software Provider

10,000 M365 Users

700TB of M365 data

Strict RTO expectations



Veeam Data Cloud
For Microsoft 365

Premium

Challenges

- Increasing reliance on Microsoft 365 applications for business operations
 - Day-to-day recovery with native tools was cumbersome
 - Didn't have a plan to recover from large-scale data loss
-

Concerns

- Data loss will impact business operations
 - Could erode customer trust
 - Negative employee experience
-

Solution

- Veeam Data Cloud Premium for Microsoft 365 with Microsoft 365 Backup Storage
 - Protecting Microsoft 365 and Entra ID
-

Impact

- Ability to recover all their Exchange data in 3 days
- Recover the entire tenant in 5 days
- Met compliance requirements
- Reduced business risk

Customer concerns that led to VDC M365 Premium

Industry	Customer Concerns
Consumer Products	Data growth is creating anxiety over incident response and inability to recover
Agriculture & Mining	Operations materially depend on SharePoint data and processes; legal and permit details cannot tolerate any disruption
Local Government	Email recovery took 2 weeks to complete, causing high frustration among business leaders to get back operational
Higher Education	Pressured regularly to recover faculty and student data; paid additional costs to retain historical data
Architecture, Engineering & Construction	On-prem solution couldn't complete SharePoint backup within 24 hours due to data volume and application speed
Government Agencies	Identified ransomware attacks targeting public officials; increasing public information requests while managing costs
Legal & Insurance	Reputation damage because of data loss or corruption; needed to be operational immediately after incidents
Financial Advisors	M365 was the most widely used, critical, and unprotected application; cyber-insurance premiums were higher without complete protection

Why VDC Premium for Microsoft 365



Lowest RTOs at Scale

Recover hundreds of TBs across Microsoft 365 workloads — even during major incidents.

Fast Recovery



True Ransomware Recovery

Restore from a clean, isolated copy independent of a compromised tenant.

Cyber Resilience



Beyond Native Retention

Cover accidental deletion, overwrites, and mass loss to deliver flexible point-in-time restores.

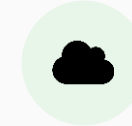
Gap Coverage



Full-Fidelity Protection

All versions, permissions, and complex SharePoint data. Precise restore options.

vs. Competitors



Guaranteed SaaS Performance

No missed backup windows or slow restores. SaaS design beats DIY at scale.

Always On

Demonstration

- Home
- Conversations
- Documents
- Notebook
- Pages
- Document Library1
- Testing List
- CA_Library1
- Site contents
- Recycle bin
- Edit

BA Test

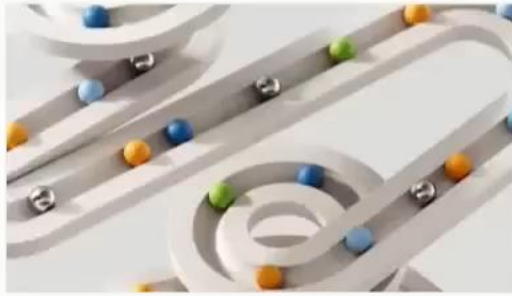
Public group | Not following | 3 members

+ New | Page details | Preview | Analytics

Published | Share | Edit

News

+ Add



Generic Prod News

Enhancing our product development process through knowledge sharing Developing cutting-edge produc...

Jon Snow February 17

Activity

Test Item 5

Jon Snow Edited the list February 17

SitePages

Generic Prod News

Jon Snow Edited February 17

Shared Documents

Delete me for Demo

Jon Snow Viewed February 10

Quick links

- Learn about a team site
- Learn how to add a page

Documents

See all

+ New | All Documents

- Delete me for Demo.docx
- Test Doc V1.docx
- Veeam V.jpg
- veeam_enterprise-backup-and-recovery-software-solutions_1698154033653.png

Veeam Data Cloud

Advanced Threat Detection

New patent-pending
ransomware and malware
detection capabilities

Automatically monitor backup
activity in real-time, identifying
unusual or suspicious behavior



Anomaly
Detection

Patent-pending tech brings
detection together in a single,
centralized threat center.



Unified Threat
Center

Detects threats as they emerge,
providing instant alerts and deep
visibility into potential risks.



Real-time
Protection

Scan to Explore

VEEAM DATA CLOUD



Veeam Data Cloud

Resilient Data Protection Made Simple

Microsoft 365

Entra ID

Microsoft Azure

Veeam Vault

Salesforce

Cloud-native backup and storage services



Confidence without complexity



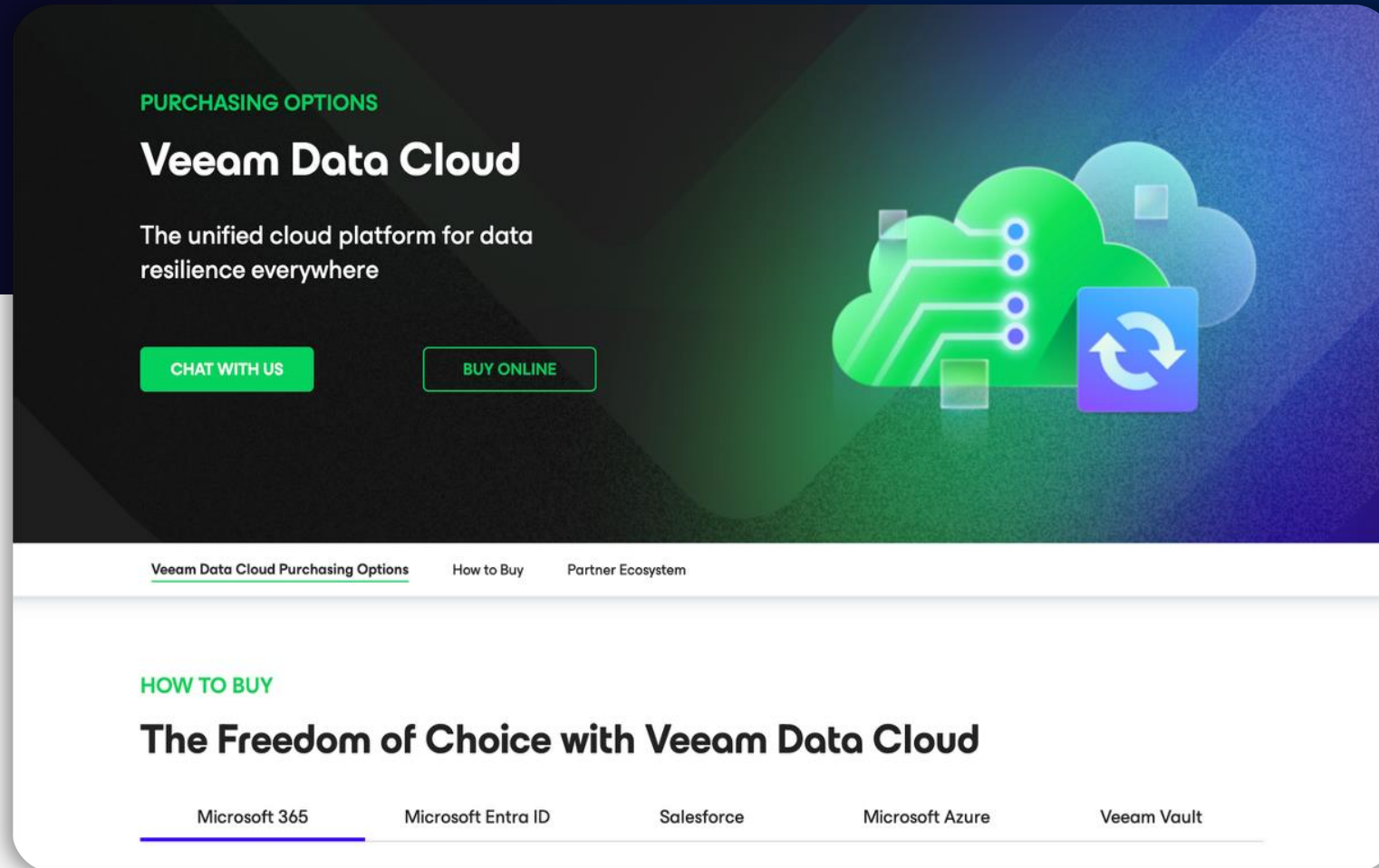
Secure Architecture



All-inclusive and predictable

Take the Next Step with Veeam Data Cloud

Contact us for more information!




PURCHASING OPTIONS

Veeam Data Cloud

The unified cloud platform for data resilience everywhere

[CHAT WITH US](#) [BUY ONLINE](#)



[Veeam Data Cloud Purchasing Options](#) [How to Buy](#) [Partner Ecosystem](#)

HOW TO BUY

The Freedom of Choice with Veeam Data Cloud

[Microsoft 365](#) [Microsoft Entra ID](#) [Salesforce](#) [Microsoft Azure](#) [Veeam Vault](#)

Find Us at
Booth #713

Scan Here



**We have an
exciting future ahead.**



Expertise and tools for your journey



Technical expertise via
our FastTrack partners

aka.ms/Microsoft/FastTrack



Tools, resources & training
on our Adoption Hub

adoption.microsoft.com



Events and real-world
knowledge in our
community

aka.ms/TechCommunity

News & community content



Microsoft Community Learning aka.ms/Community/LearningChannel

Community led expert content on all your favorite Microsoft services.



Start your week with live news and event updates aka.ms/MondaysatMicrosoft
Watch live or on-demand & share our blog.

Home / Microsoft 365 Copilot

Microsoft 365 Copilot

Deliver value and employee satisfaction with our tools for Microsoft 365 Copilot deployment and adoption. This powerful technology combines the power of large language models (LLMs) with your organization's data – all in the flow of work – to turn your words into one of the most powerful productivity tools on the planet.

Microsoft 365 Copilot Chat and in-app experiences provide real-time intelligent assistance, enabling users to enhance their creativity, productivity, and skills.

[Looking for Copilot resources for Small and Medium Businesses? >](#)

Copilot Success Kit

Our Success Kit empowers you to achieve rapid value with Copilot while enabling your progressive skilling journey with AI tools.

[Download here >](#)

Copilot Chat and agent starter kit

This new kit includes guidance on IT controls, setup, and resources to help prepare your tenant and enable your users to create and use agents.

[Explore the kit >](#)

Join the Copilot community

The Microsoft 365 Copilot community is your hub for the official blog, latest news, and discussions.

[Join now >](#)

Microsoft 365 Copilot

Welcome to the Microsoft 365 Copilot community. Your hub for the latest news, live events, and discussions on Microsoft 365 Copilot. For help & learning (how-to articles and training resources), please visit [Microsoft 365 Copilot Adoption hub](#).

Search this community

[Unfollow](#)

#M365Con

Microsoft 365 COMMUNITY CONFERENCE

May 6-8 Las Vegas

Your front-row seat to the future of work

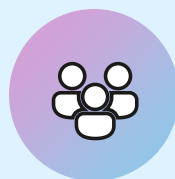
The ultimate Microsoft 365 community event

Learn directly from the experts and redefine what's possible at work—join us at the Microsoft 365 Community Conference.

[Learn more!](#)

Stay Connected!

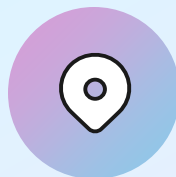
Engage with the best community in tech... There's something for everyone!



Microsoft Tech Community

The community platform for Microsoft 365 – forums, blogs, and events

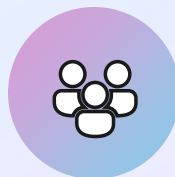
<https://aka.ms/joinMTC>



CommunityDays.org

Find or host a local event in your area or to match your interests

www.communitydays.org

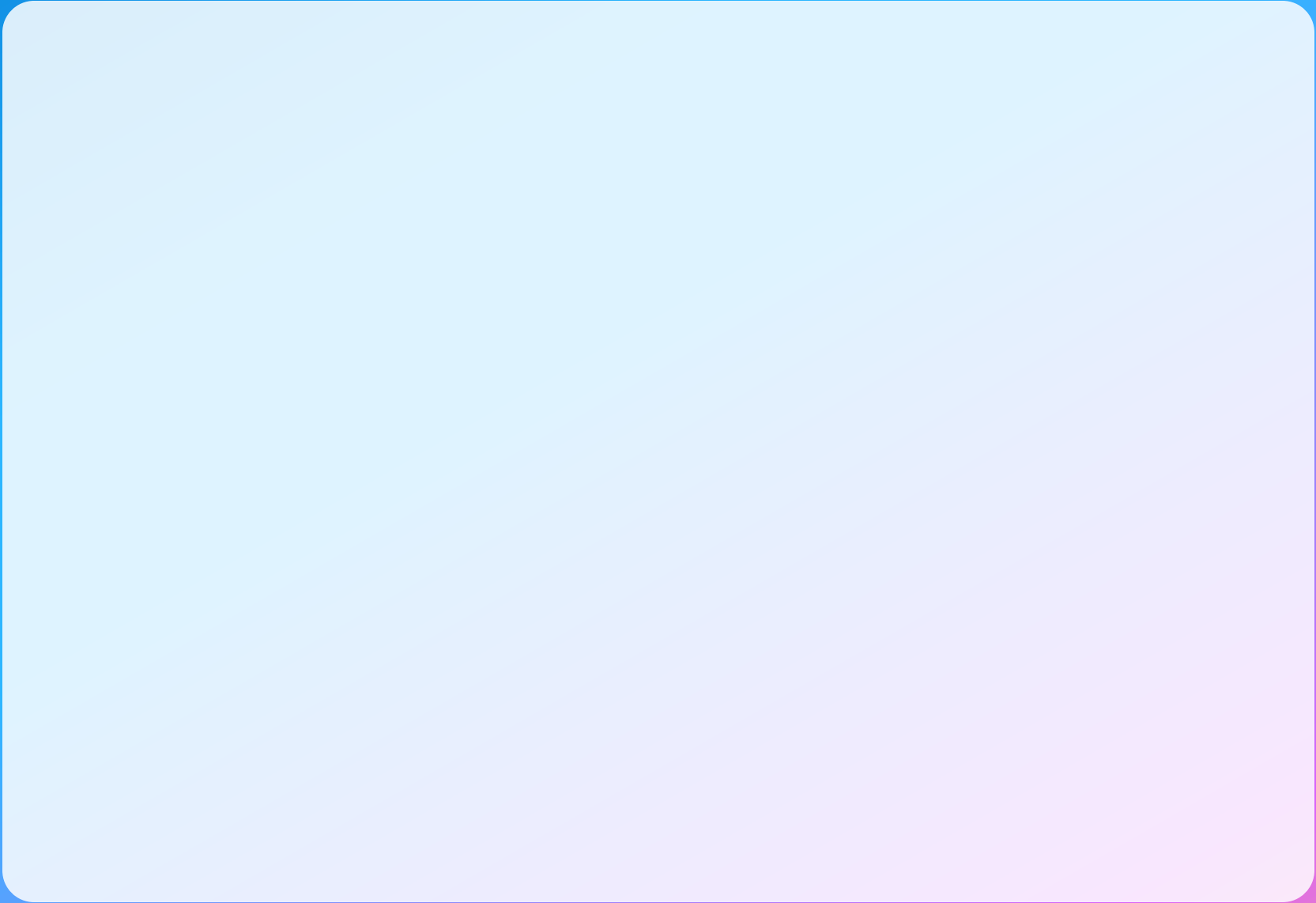


Microsoft Community on LinkedIn

News, announcements and training delivered to your news feed

<https://aka.ms/microsoftcommunitylinkedin>





The one stop shop for Microsoft ecosystem community events

The screenshot displays the Microsoft Community Days website interface. At the top left is the logo "Community Days Supporting the Microsoft Community". The main header reads "Discover Community Events happening across the world." Below this is a search bar and filter options. The "WHERE" filter is set to "Global". Under "FILTERS", "Registration Open" is checked, and "Hide Others" is also checked. The main content area features a grid of event cards, each with a unique graphic and event details:

- FABRIC DATA DAYS**: Nov 4 - Dec 11, 2025. Location: Your city, Your country, United States. Format: Hybrid. Cost: Free.
- SMARTCLOUD 365 - 2025**: November 25, 2025. Location: Germany. Format: Virtual. Cost: Free.
- DYNUG AUTUMN CONFERENCE 2025**: November 25 - 26, 2025. Location: Oslo, Gardermoen, Norway. Format: Paid. Cost: 1,311.88.
- SHIFT ENTER SUMMIT 2025**: November 26, 2025. Location: Budapest, Hungary. Format: Paid.
- AI COMMUNITY CONFERENCE - TORONTO 2025**: November 28, 2025. Location: Toronto, Ontario, Canada. Format: Free.
- SEASON OF AI - MCP**: November 28, 2025. Location: Gurgaon, Haryana, India. Format: Hybrid. Cost: Free.
- ESPC25**: December 1 - 4, 2025. Location: Dublin, Dublin 1, Ireland. Format: Paid.
- MSREBUILD 2025**: December 2, 2025. Location: Nantes, Pays de la Loire, France. Format: Free.
- TECHBAYANIHAN 2025**: December 3 - 4, 2025. Location: Manila City, National Capital Region, Philippines. Format: Free.

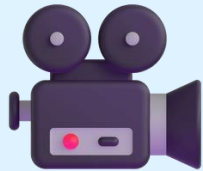
www.communitydays.org



SharePoint at 25 short film: *More than Code*

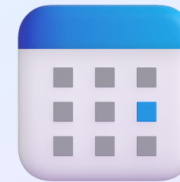
In honor of SharePoint's 25th birthday, *More Than Code* is a short film that explores the people, passion, and innovation behind one of the most transformative platforms in modern work. This film captures the stories of builders, leaders, and community champions who helped shape SharePoint into the knowledge backbone for collaboration, Copilot, and the next generation of agents.

SharePoint is more than code—it's 25 years of connection, innovation and impact.



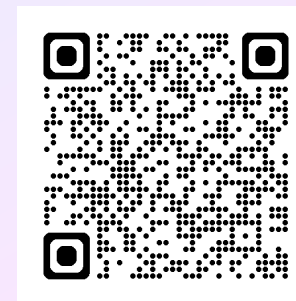
Watch the digital premiere

Stream the documentary online globally in late April and celebrate SharePoint's 25-year journey from anywhere.



Watch the SharePoint at 25 digital event

Prepare for the film with a special digital event featuring insights, stories, and what's next for SharePoint in the era of AI.



Join MGCI – Learn, Share, Grow.

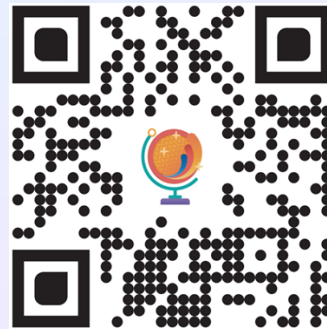
The Microsoft Global Community Initiative (MGCI) - Empowering global Microsoft communities with the tools, training, and resources to create impactful events and amplify diverse voices.

Learn, Share, Grow.

Event producers unite!

Join MGCI today!

<https://aka.ms/MGCI>



Thank you to our
Microsoft
Most Valuable
Professionals (MVP)
and Regional Directors!

