



Microsoft 365
COMMUNITY CONFERENCE

FastTrack your M365 Deployment

Manas Kumar Biswas & Jeff Manning

© Copyright Microsoft Corporation. All rights reserved.



Whoa

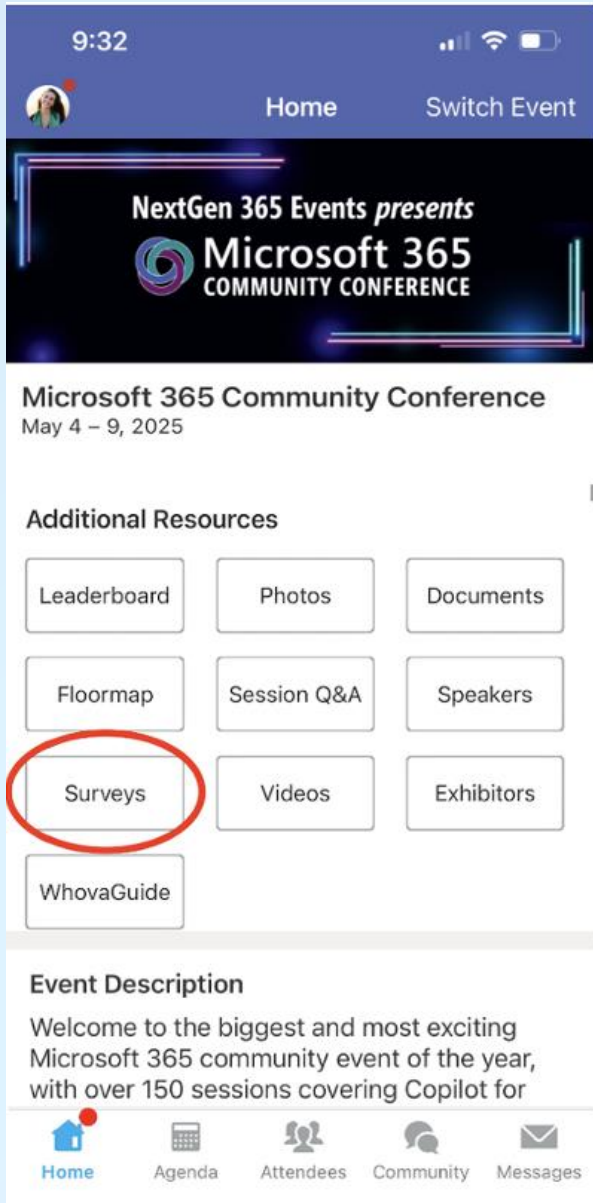


The official event app for the
Microsoft 365 Community Conference

Event invitation code: Orlando2026

Join the event app to access:

- ➔ Event announcements
- ➔ Personalized agenda, session details
- ➔ Speaker & attendee profiles
- ➔ Networking, meet-ups, messages
- ➔ Event documents



Session feedback surveys

We want to hear from YOU!

Share your feedback to make next years conference even better!

Here's how –

- Simply go to the Whova App on your smartphone.
- Scroll down on the M365 Community Conference Homepage to 'Additional Resources' to click "Surveys".
- Click Session Feedback.
- Scroll down to find this session title.
- Complete the session feedback survey.
- Finally, click 'Submit'.

It's that easy!



Manas K Biswas

Principal Onboard Mgr
/manas-kumar-biswas-
950302a7



Jeff Manning

Sr. Product Manager
/Jeffrey-manning-
07aa916

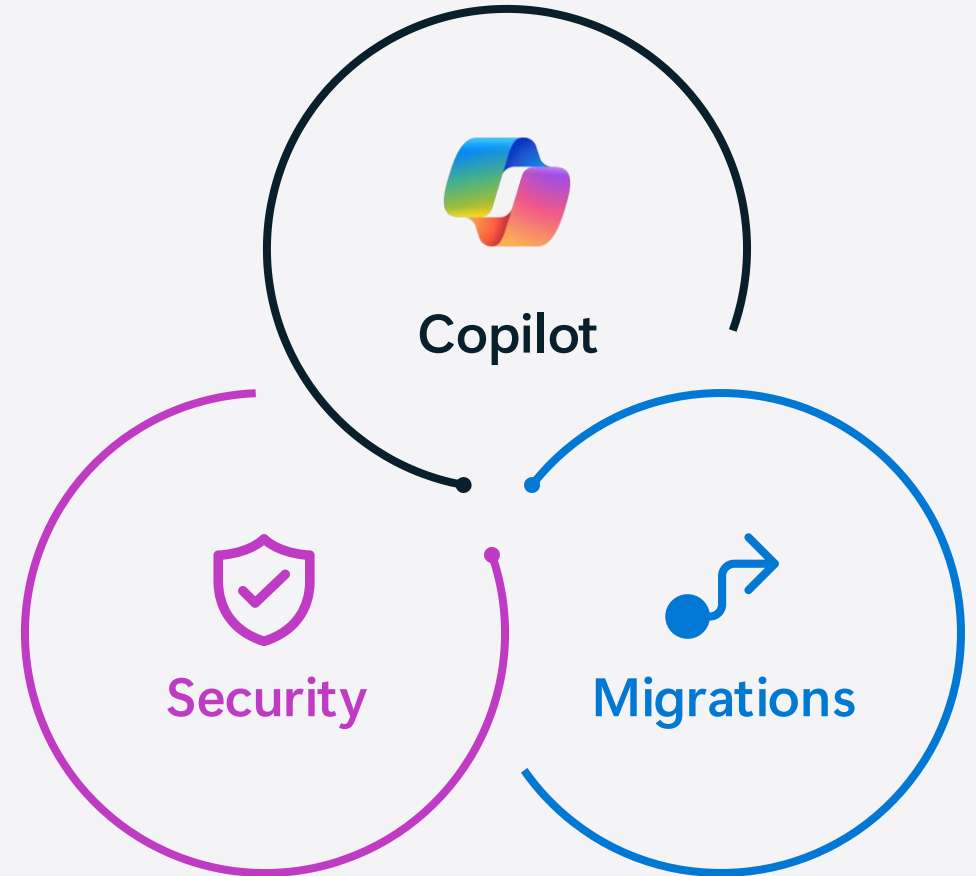
**We Have An
Exciting Future Ahead**

FastTrack for Microsoft 365

FastTrack is a **benefit** designed to help your customer deploy Microsoft 365 through:

- Self-serve deployment guidance
- Access to FastTrack Engineering Resources
- Connection to qualified partners
- Data Migration Services

Customers can use FastTrack services with a new or existing qualifying subscription. For eligibility details, see the [Service Description](#).



Deploy with Expert, Technical Guidance From FastTrack

Remote Guidance and Data Migration Services From FastTrack Can Help You:



Deploy Microsoft 365 Copilot, Microsoft 365 Copilot Chat, and Agents—including pre-requisite support



Configure identity, security, compliance, and cloud management



Migrate data and ensure application compatibility



Evaluate and deploy Windows 365

FastTrack for Microsoft 365 Eligibility

Your customers can get started with a qualifying subscription

FastTrack provides...

Microsoft 365
customers

Customers with
150+ licenses

Advanced deployment guides in Microsoft 365 admin center



Remote guidance from FastTrack Specialists



Assistance with data and email migration



FastTrack Provides Expert End-to-End Guidance

Realize value with FastTrack's proven process

Deployment Plan

Define a vision for success by **identifying and prioritizing scenarios, building a deployment plan, and creating data migration strategy**

Core + Service Onboard

Using the Advance Deployment Guide (ADGs) to complete remediation tasks, core enablement, service enablement, and migrate email and data with **online guidance, resources and data migration services**

Drive Value

Use **guides, training, and best practices** to execute an adoption plan and **drive business value**

FastTrack products and capabilities

Select a product name below to view its corresponding slide with detailed information

- [App Assure](#)
- [Microsoft 365 Copilot](#)
- [Microsoft 365 Copilot extensibility](#)
- [Microsoft Defender for Cloud Apps](#)
- [Microsoft Defender for Endpoint](#)
- [Microsoft Defender for Identity](#)
- [Microsoft Defender for Office 365](#)
- [Microsoft Defender for Servers](#)
- [Microsoft Defender XDR](#)
- [Microsoft Entra ID Governance](#)
- [Microsoft Entra ID Premium](#)
- [Microsoft Entra Internet Access](#)
- [Microsoft Entra Private Access](#)
- [Microsoft Entra Suite](#)
- [Microsoft Intune](#)
- [Microsoft Intune Suite](#)
- [Microsoft Purview eDiscovery & Audit](#)
- [Microsoft Purview Compliance Manager](#)
- [Microsoft Purview Data Lifecycle and Purview Records Management](#)
- [Microsoft Purview Information Protection](#)
- [Microsoft Purview Insider Risk Management](#)
- [Microsoft Security Copilot](#)
- [Microsoft Security Exposure Management](#)
- [Migrate data](#)
- [Migrate email](#)
- [Windows 365](#)

What You Can Expect When You Work with FastTrack

FastTrack responsibility

- ✓ Access to FastTrack Specialists for eligible customers
- ✓ Enablement and deployment guidance
- ✓ Expert guidance for supported services
- ✓ Perform email and data migration (150+ licenses)
- ✓ Best practices, self-serve tools, and resources

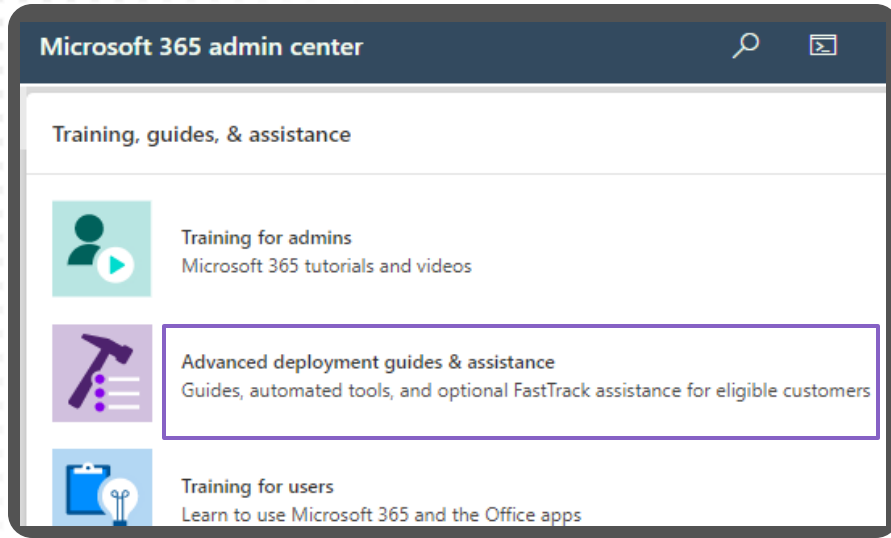
Customer responsibility

- ✓ Project management, on-site readiness/training
- ✓ Remediation and hands-on configuration
- ✓ Custom scopes of work
- ✓ Self-Serve email and data migration (150+ licenses)
- ✓ Execute on change management and process optimization

For current details regarding FastTrack and customer roles, responsibilities, and expectations, refer to the [FastTrack service description](#).

Advanced Deployment Guides in Microsoft 365 Admin Center

Self-Serve



All customers with a Microsoft 365 tenant can access the **Advanced deployment guide** (wizard) for actionable guidance to set up, configure, and deploy scenarios.

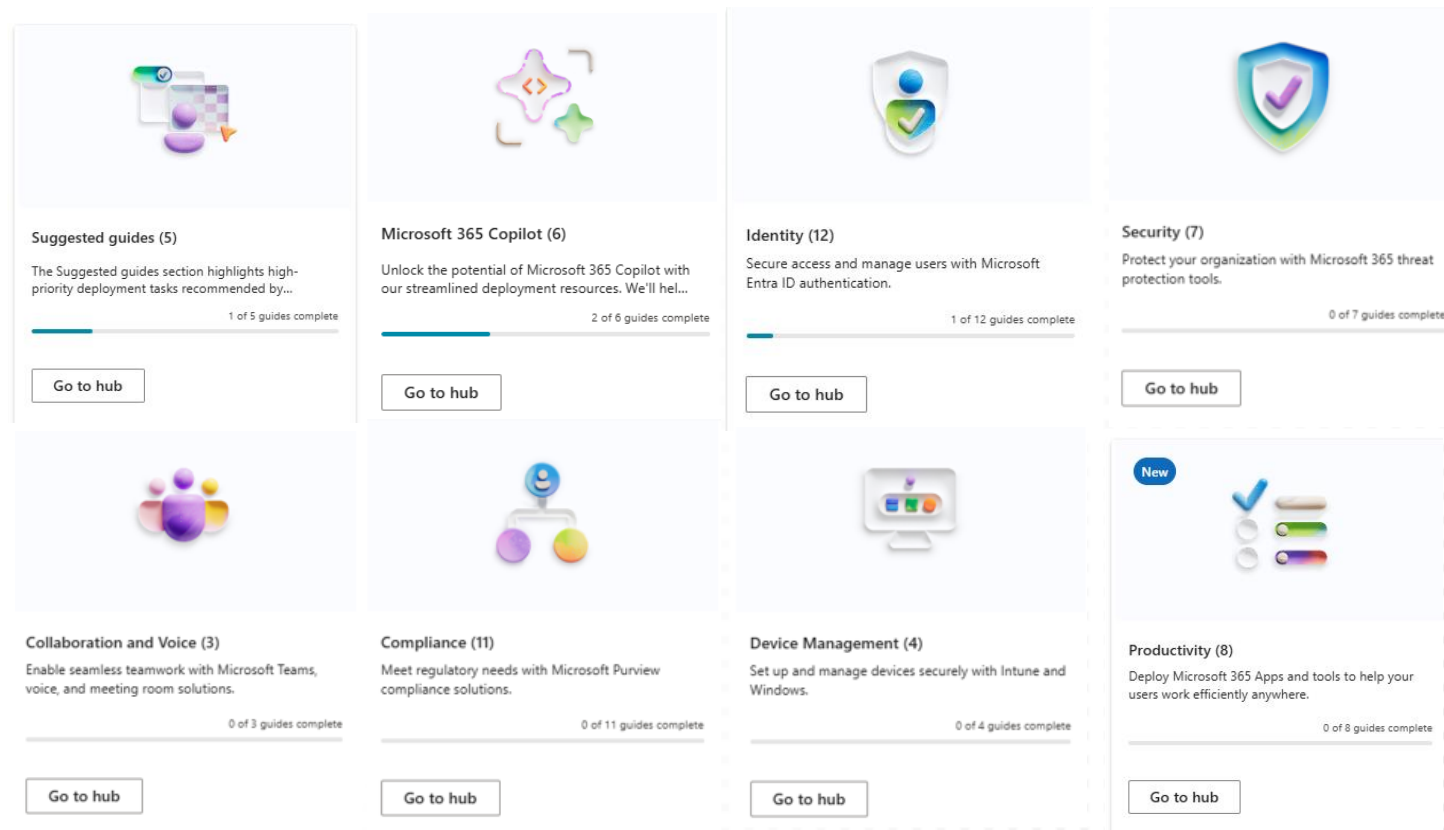
Why self-serve with advanced deployment guide?

- Guidance helps simplify deployment and gives IT Admins and ITDMs confidence in interactions with BDMs
- Guidance is organized by use cases that help solve business needs and includes required and recommended steps for enablement
- IT Admins may choose to access and run deployment guides directly within the Microsoft Admin Center (MAC), without FastTrack specialist

Navigate/log in to [MAC](#) > "Advanced deployment guides & assistance"

Deployment guides Training Resources FastTrack assistance FastTrack Migration assistance Tenant analyzer

The following deployment guides give you access to the same Microsoft 365 deployment guidance provided by FastTrack onboarding specialists, without the need for a phone call. Each guide steps you through your choices for the features and options you want to deploy. You'll also get instruction, scripts, and in some cases, you can use the guide to easily configure a setting or activate a feature.

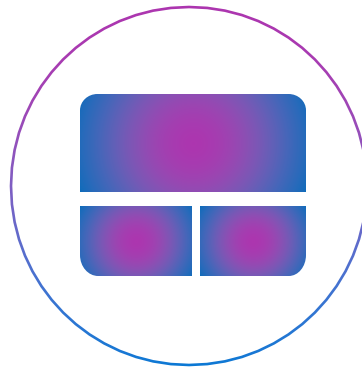


Typical ALM & Governance Engagement

Scale Copilot Agents with existing security and compliance capabilities



Security &
Governance



Management
Controls



Agent
365

Typical Agent & Connector Engagement

Connect Your Enterprise Knowledge to Work IQ with Copilot Connectors



Enterprise Knowledge



Copilot Connectors

One-Click
Copilot Connector
Setup



Work IQ
Intelligence Layer



Copilot Chat



Copilot Agents



Researcher



Copilot Search



Copilot in Word



Copilot in PowerPoint

Get started with FastTrack for Microsoft 365

Microsoft FastTrack helps customers plan for and deploy Microsoft 365

- [FastTrack benefit for Microsoft 365](#)
- [Eligible plans and services](#)

Microsoft customers can get started with FastTrack by completing these three required steps:

1. Create a Microsoft 365 tenant, also known as an organizational account.
2. Add subscriptions to a Microsoft 365 tenant.
3. Submit a [request for assistance](#) directly via the Microsoft 365 Setup portal.



FastTrack Resources for Customers



FastTrack Request for Assistance:

aka.ms/Microsoft365RFA



FastTrack Service Description:

aka.ms/FastTrackServiceDescription



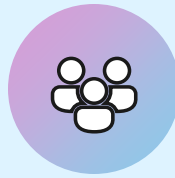
About FastTrack:

www.microsoft.com/FastTrack



Stay Connected!

Engage with the best community in tech... There's something for everyone!



Microsoft Tech Community

The community platform for Microsoft 365 – forums, blogs, and events

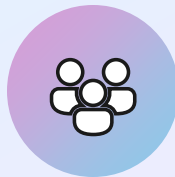
<https://aka.ms/joinMTC>



CommunityDays.org

Find or host a local event in your area or to match your interests

www.communitydays.org



Microsoft Community on LinkedIn

News, announcements and training delivered to your news feed

<https://aka.ms/microsoftcommunitylinkedin>



The one stop shop for Microsoft ecosystem community events

The screenshot displays the Microsoft Community Days website interface. At the top left is the logo "Community Days Supporting the Microsoft Community". On the right are navigation links for "Home", "Events", and "Calls". A large banner reads "Discover Community Events happening across the world." Below this is a search bar with a magnifying glass icon and a "Search Events..." placeholder. To the right of the search bar are filters for "WHEN" (set to "Upcoming Events") and "VIEW AS" (set to "Tiles").

Below the search bar is a "WHERE" section with radio buttons for "Global", "Country", "Region", and "Sub Region". To the right is a "FILTERS" section with checkboxes for "Registration Open", "Call for Speakers", "Call for Sponsors", "Hide Paid", and "Hide Others" (which is checked).

The main content area is a grid of event cards. Each card includes a "LIVE" or "DAYS" indicator, a title, a date range, a location, and a "Free" or "Paid" status. The events shown are:

- FABRIC DATA DAYS**: Nov 4 - Dec 11, 2025. Location: Your city, Your country, United States. Status: Free.
- SMARTCLOUD 365 - 2025**: November 25, 2025. Location: Germany. Status: Free.
- DYNUG AUTUMN CONFERENCE 2025**: November 25 - 26, 2025. Location: Oslo, Gardermoen, Norway. Status: Paid.
- SHIFT ENTER SUMMIT 2025**: November 26, 2025. Location: Budapest, Hungary. Status: Paid.
- AI COMMUNITY CONFERENCE - TORONTO 2025**: November 28, 2025. Location: Toronto, Ontario, Canada. Status: Free.
- SEASON OF AI - MCP**: November 28, 2025. Location: Gurgaon, Haryana, India. Status: Free.
- ESPC25**: December 1 - 4, 2025. Location: Dublin, Dublin 1, Ireland. Status: Paid.
- MSREBUILD 2025**: December 2, 2025. Location: Nantes, Pays de la Loire, France. Status: Free.
- TECHBAYANIHAN 2025**: December 3 - 4, 2025. Location: Manila City, National Capital Region, Philippines. Status: Free.

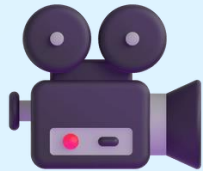
www.communitydays.org



SharePoint at 25 short film: *More than Code*

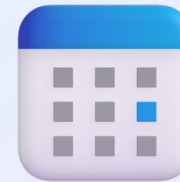
In honor of SharePoint's 25th birthday, *More Than Code* is a short film that explores the people, passion, and innovation behind one of the most transformative platforms in modern work. This film captures the stories of builders, leaders, and community champions who helped shape SharePoint into the knowledge backbone for collaboration, Copilot, and the next generation of Agents.

SharePoint is more than code—it's 25 years of connection, innovation and impact.



Watch the digital premiere

Stream the documentary online globally in late April and celebrate SharePoint's 25-year journey from anywhere.



Watch the SharePoint at 25 digital event

Prepare for the film with a special digital event featuring insights, stories, and what's next for SharePoint in the era of AI.



Join MGCI – Learn, Share, Grow.

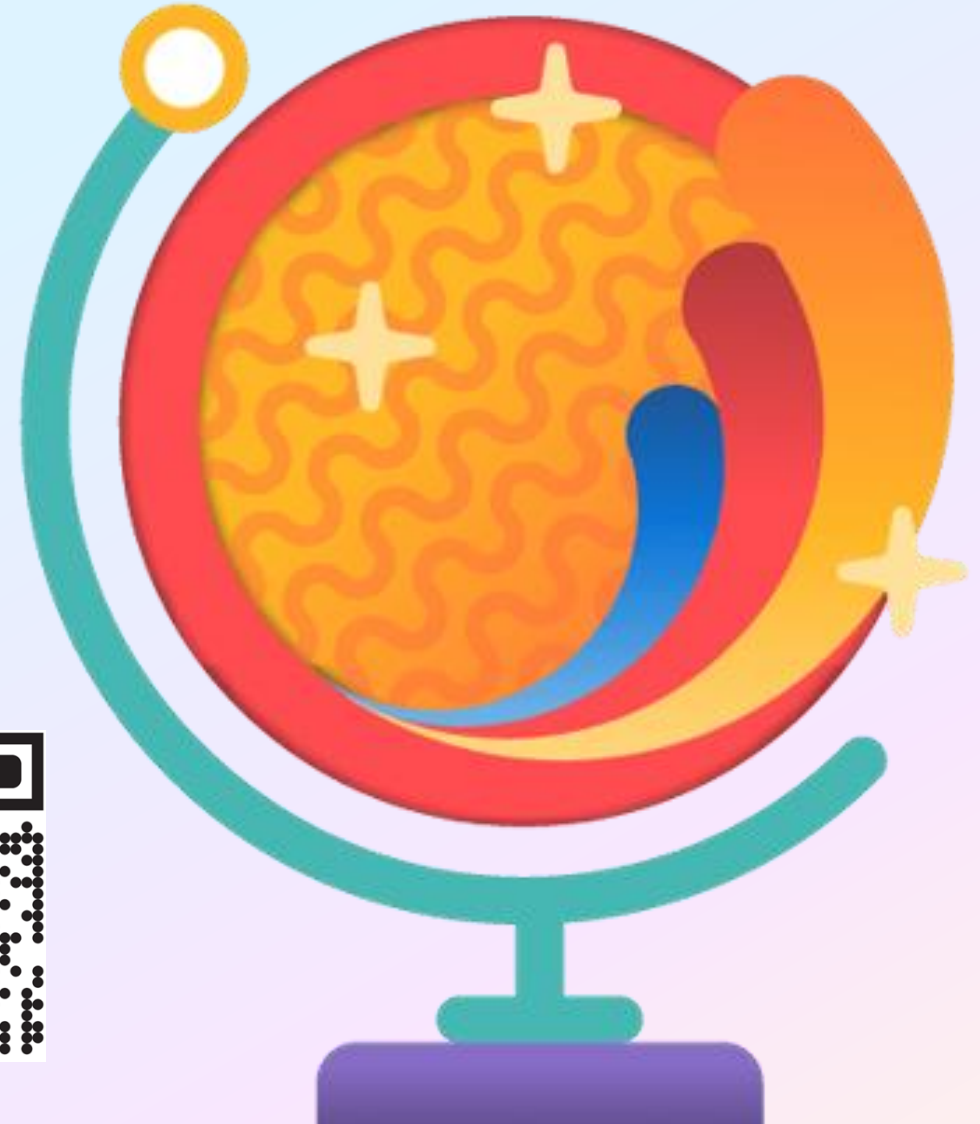
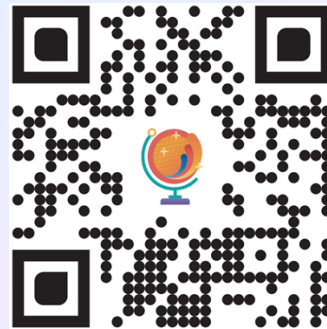
The Microsoft Global Community Initiative (MGCI) - Empowering global Microsoft communities with the tools, training, and resources to create impactful events and amplify diverse voices.

Learn, Share, Grow.

Event producers unite!

Join MGCI today!

<https://aka.ms/MGCI>



**Thank you to our
Microsoft
Most Valuable
Professionals (MVP)
and Regional
Directors!**

